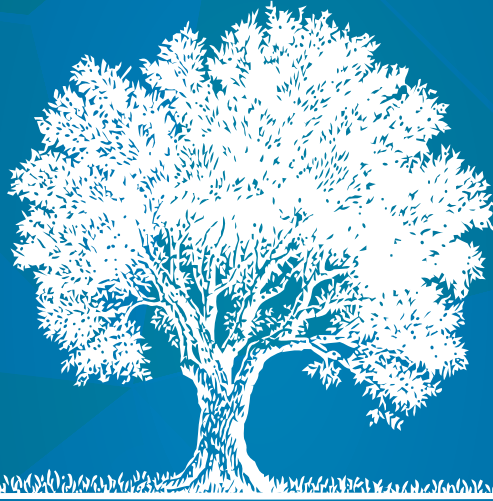




# MARMARABİRLİK

*“Name of The Olive”*



## PRODUCT CATALOGUE



**MARMARABİRLİK**



**MARMARABİRLİK**

*Alaca*



*Alaca*





# MARMARABİRLİK

Marmarabirlik which inspires its name from Marmara Sea was established in order to cultivate world's finest table olives and introduce them to consumers by processing in best conditions. Marmarabirlik which was founded in 1954 with the cooperation of regional olive producers, is an Agricultural Sales Cooperatives Union.

Marmarabirlik which was initially formed by the unification of Gemlik, Mudanya, Erdek Cooperatives and evolved to become a world brand over time, has 8 cooperatives in Bursa, Balıkesir and Tekirdağ provinces. Olive is packaged with 200 tons of daily production capacity and 220 tons of olive is processed for olive oil production in the modern facilities established on 400 acres of land where the Headquarters is also located.

Marmarabirlik of which headquarter is located in Bursa, processes the olives produced by its partners as table olive, olive paste, olive oil and involved in marketing both in domestic and foreign markets.

Marmarabirlik is serving hundreds of thousands consumers with 32 thousand active olive producers and take its place among 500 most powerful industrial institutions in Turkey.

Marmarabirlik, purchase 40-45 % of the olives grown in its region and process them with its 70 thousand tons of storage and ripening capacity. Exports its products to whole of Europe, 5 Continents and 47 countries abroad in 2015.





## Benefits of Olive

It is beneficial for digestion due to its balanced crude fiber content. Anti-oxidants found in table olive protect against heart and vascular diseases, hypertension and cancer for lifelong. PIMonth a protective role for gastric and ulcers. Protects against colon, breast and skin cancer with oleic acid contents. Contains Vitamin E which is vital for skin and prevents tissues from aging and reduce bad effects of ageing on brain functions. Anti-aging "oleuropein" is stated to be used for the medicines used for cancer mainly in USA and many developed countries.

## Marmarabirlik Olives

Marmarabirlik Gemlik type olives which have characteristics such as thin skinned, small seed, easily separable from its seed and plump are harvested after they turn into black and matured.

Gemlik type olives have oil up to 25%. Olive is a healthy product basically containing Vitamin A, iron and calcium. After completely subjected to natural fermentation, it is placed in various kinds of packages and introduced to the domestic and foreign markets. Low salty and Gold products desalted with natural methods are ideal for those who are on low salt diet.





## Marmarabirlik Alaca Olives

Gemlik type of olives harvested while they are still brown and not yet turned into black on the branch and naturally fermented.

## Marbir Olives

Grown in Erdek, Edincik and Marmara Island on the Marmara Sea Coast and has a bright black colour. Its water content is higher and fat content is lower compared to Gemlik Type and produced out of Edincik Water Type Olives. High quality black table olives contain Vitamin A, iron and calcium. Offered to the market after exposed to natural fermentation.

## Marbir Alaca Olives

Edincik Water Type of olives harvested while they are still brown and not yet turned into black on the branch and naturally fermented.

## Olive Home Organic Olives

Produced and certified according to organic farming methods without any use of chemical fertilizers and pesticides; products which are produced of Gemlik type olives in special product lines without any use of preservatives or caustic and exposed to natural fermentation. To qualify a product as organic, olive tree grown in pure soil should be a month from the industrial and environmental pollution and especially should not be involved in agricultural activities in which chemicals and fertilizers are used. All steps carried out from the garden that Olive Home Organic Olives are grown to the consumption of the consumer are supervised by a certification institution.

Olive Home Organic Olive Oil is produced in special production lines with no permission to mixtures, from the olives grown according to organic farming methods without any use of chemical fertilizers and pesticides. Organically grown olives are recorded during pick up phase, olive oil pressing and packaging procedures are inspected by certification companies according to the international quality control conditions. Since it is the closest natural food source to breast milk, Olive Home Organic Natural Extra Virgin olive oil is used for infant and child nutrition.





## Olive Processing Techniques

### Natural Black/Multicolored Salted Table Olive Production

- Black and blackish olives are picked up by hand harvested when matured.
- Sized in machine and classified according to their grain size.
- Olives are put into separate pools according to their grain size and pressed.
- They are salted and left for fermentation.
- Salt is circulated in certain periods and fermentation controls are made.
- Olives sweetened are taken out of the pools and separated according to their grain size.
- Packaged after stem sorting, washing, selecting and sorting.

### Oily Salted Olive Production

- Natural/Multicolored olives are taken out the pools and classified according to their grain size after their fermentation is complete.
- After stem sorting, washing, cleaning and selection processes olives are left for skin-drying.
- After skin-drying olives are oiled and packaged.

### Dry Saddle Olive Production

- Black olives are taken out the pools and classified according to their grain size after their fermentation is complete.
- After stem sorting, washing, cleaning and selection processes olives are warmed at a certain temperature and time in drying oven.
- After drying products are conveyed to the cooling unit and left for cooling.
- After sorting and selection olives are oiled and packaged.

### Oily Saddle Olive Production

- Curled, strong structured raw black olive is used for this production.
- Olives are washed and put in plastic bins with salt.
- Bins are closed after corn oil is added.
- Closed bins are laid over their side and rotated in certain periods.
- Sweetening lasts 3-4 months.
- In the end of the period sweetening control is made and the olives sweetened are conveyed to the production.
- After stem sorting, sizing, sorting and selection olives are packaged.

### Coctail, Cracked, Stuffed Green Olive Production

- Olives are picked up in yellow maturity period ( september), sized and separated according to the grain size.
- Olives in caliber base are taken into tanks and alkaline solution is added.

- Olives are processed with alkaline and the material giving the bitter taste is broken.
- Alkaline in the contexture of the olive is removed by washing process.
- Salted and left for fermentation.
- Fermentation process and controls are made.
- Approximately after 2-3 months olives are taken out of the tanks and sized.
- Sized olives are cracked in the cracking machine if used in cracked olive production.
- If used in stuffed olive production, seeds are removed and stuffed with filling.
- Olives are packaged after sorting and selection.
- Olives prepared for Coctail are packaged after stem sorting, sizing, selection.

### **Natural Edremit Cracked Green Olive Production**

- Edremit Green Olives are harvested by picking up by hand in yellow maturity period and separated according to the grain size.
- Olives sized are cracked in the cracking machine after stem sorting.
- Cracked olives are put into salt tanks.
- Fermentation process and controls are operated of the olives left for fermentation.
- Approximately after 6 months sweetening controls are made and olives are sorted, washed,selected and packaged.

### **Olive Paste Production**

- Small grain olives which are not produced as table olives and soft grain olives separated during table olive production are used in olive past production.
- Excessive salt is removed from the content by desalination.
- Seed and crust is separated and grain pulp is smashed completely.
- Excessive oil is separated from the olive and smashing is kept awMonth.
- Ph regulator and emulgator are added while smashing.
- If spicy paste is produced spice is added.
- Package and pasteurization is applied.

### **Natural Olive Oil Production(Natural Extra Virgin,Natural First)**

- Olives with small grain and out of caliber are appropriate for olive oil and used for olive oil production in continuous facilities.
- Olives spilled into the tank are separated from the materials such as leaves, branches etc. with the help of a fan.
- Washed in the washing tank and the dirt is removed.
- Cracked together with the seeds and made into dough.
- Dough kneaded and the temperature is controlled all the time, temperature shall not exceed35°C!
- After dough kneaded oil,black water and olive pomace are separated.
- Oil taken from the separator is conveyed to the oil holding tank.
- Mixed sample is taken from the tank and sent to the lab for quality analysis.
- Olive is categorized according to the analysis results as Natural Extra Virgin, Natural First, or raw oil.

**Natural Extra Virgin Olive Oil:** Obtained through mechanical and physical operations without damaging the natural structure of the oil and without any use of chemicals; does not have any defects , has positive flavor features in its content such as fruity,has free oil acid not more than 0.8 gr per 100g in terms of oleic acid.

**Natural First:** Like Natural Extra Virgin, it is obtained by physical or mechanical wMonths from the fruit without any use of chemicals but has a little defect and hasfree oil acid not more than 2gr per 100g in terms of oleic acid.

**Riviera:** Is formed by the mixture of natural olive oil which is appropriate for direct use and refined olive oil. Its features differs between natural and refined oil.Has free oil acid not more than 1.0 gr per 100g in terms of oleic acid.

**Refined Olive Oil:** Cannot be used as natural nutrition.Obtained through refinement of raw olive oil by operations not damaging t its natural triglyceride formation , has free oil acid not more than 0,3gr per 100g in terms of oleic acid.



# MARMARABİRLİK

*“Name of The Olive”*

*From its Branch to Your Table...*





**10 Kgs Tin Black Olives in Brine  
201-230 pcs/kgs - XL - MEGA**

**Net Weight :** 14,6 kgs  
**Drained Weight :** 10 kgs  
**Gross Weight :** 15,45 kgs  
**Pieces/Box :** 1 pc  
**Boxes/Pallet :** 45 Pcs  
**Shelflife :** 24 Month  
**Pack Barcode:** 8690103119017



**10 Kgs Tin Oil Cured Black Olives  
201-230 pcs/kgs - XL - MEGA**

**Net Weight :** 10,15 kgs  
**Drained Weight :** 10 kgs  
**Gross Weight :** 11 kgs  
**Pieces/Box :** 1 pc  
**Boxes/Pallet :** 75 Pcs  
**Shelflife :** 12 Month  
**Pack Barcode:** 8690103199019



**10 Kgs Tin Black Olives in Brine  
201-230 pcs/kgs - XL - MEGA**

**Net Weight :** 14,6 kgs  
**Drained Weight :** 10 kgs  
**Gross Weight :** 15,45 kgs  
**Pieces/Box :** 1 pc  
**Boxes/Pallet :** 45 Pcs  
**Shelflife :** 24 Month  
**Pack Barcode:** 8690103169012



**10 Kgs Tin Oil Cured Black Olives  
201-230 pcs/kgs - XL - MEGA**

**Net Weight :** 10,15 kgs  
**Drained Weight :** 10 kgs  
**Gross Weight :** 11 kgs  
**Pieces/Box :** 1 pc  
**Boxes/Pallet :** 75 Pcs  
**Shelflife :** 12 Month  
**Pack Barcode:** 8690103000018



**10 Kgs Tin Black Olives in Brine  
231-260 pcs/kgs - L - HİPER**

**Net Weight :** 14,6 kgs  
**Drained Weight :** 10 kgs  
**Gross Weight :** 15,45 kgs  
**Pieces/Box :** 1 pc  
**Boxes/Pallet :** 45 Pcs  
**Shelflife :** 24 Month  
**Pack Barcode:** 8690103116016



**10 Kgs Tin Oil Cured Black Olives  
231-260 pcs/kgs - L - HİPER**

**Net Weight :** 10,15 kgs  
**Drained Weight :** 10 kgs  
**Gross Weight :** 11 kgs  
**Pieces/Box :** 1 pc  
**Boxes/Pallet :** 75 Pcs  
**Shelflife :** 12 Month  
**Pack Barcode:** 8690103196018



**10 Kgs Tin Purple Olives in Brine  
231-260 pcs/kgs - L - BAŞBOY**

**Net Weight :** 14,6 kgs  
**Drained Weight :** 10 kgs  
**Gross Weight :** 15,45 kgs  
**Pieces/Box :** 1 pc  
**Boxes/Pallet :** 45 Pcs  
**Shelflife :** 24 Month  
**Pack Barcode:** 8690103990012



**10 Kgs Tin Oil Cured Purple Olives  
231-260 pcs/kgs - L - BAŞBOY**

**Net Weight :** 10,15 kgs  
**Drained Weight :** 10 kgs  
**Gross Weight :** 11 kgs  
**Pieces/Box :** 1 pc  
**Boxes/Pallet :** 75 Pcs  
**Shelflife :** 12 Month  
**Pack Barcode:** 8690103880016



**10 Kgs Tin Black Olives in Brine  
231-260 pcs/kgs - L - HİPER**

**Net Weight :** 14,6 kgs  
**Drained Weight :** 10 kgs  
**Gross Weight :** 15,45 kgs  
**Pieces/Box :** 1 pc  
**Boxes/Pallet :** 45 Pcs  
**Shelflife :** 24 Month  
**Pack Barcode:** 8690103166011



**10 Kgs Tin Oil Cured Black Olives  
231-260 pcs/kgs - L - HİPER**

**Net Weight :** 10,15 kgs  
**Drained Weight :** 10 kgs  
**Gross Weight :** 11 kgs  
**Pieces/Box :** 1 pc  
**Boxes/Pallet :** 75 Pcs  
**Shelflife :** 12 Month  
**Pack Barcode:** 8690103000025

**10 KGS TINS**



### 10 Kgs Tin Purple Olives in Brine 231-260 pcs/kgs - L - BAŞBOY

**Net Weight :** 14,6 kgs  
**Drained Weight :** 10 kgs  
**Gross Weight :** 15,45 kgs  
**Pieces/Box :** 1 pc  
**Boxes/Pallet :** 45 Pcs  
**Shelflife :** 24 Month  
**Pack Barcode:** 8690103600027



### 10 Kgs Tin Oil Cured Purple Olives 231-260 pcs/kgs - L - BAŞBOY

**Net Weight :** 10,15 kgs  
**Drained Weight :** 10 kgs  
**Gross Weight :** 11 kgs  
**Pieces/Box :** 1 pc  
**Boxes/Pallet :** 75 Pcs  
**Shelflife :** 12 Month  
**Pack Barcode:** 8690103600065



### 10 Kgs Tin Black Olives in Brine 261-290 pcs/kgs - M - SÜPER

**Net Weight :** 14,6 kgs  
**Drained Weight :** 10 kgs  
**Gross Weight :** 15,45 kgs  
**Pieces/Box :** 1 pc  
**Boxes/Pallet :** 45 Pcs  
**Shelflife :** 24 Month  
**Pack Barcode:** 8690103111011



### 10 Kgs Tin Oil Cured Black Olives 261-290 pcs/kgs - M - SÜPER

**Net Weight :** 10,15 kgs  
**Drained Weight :** 10 kgs  
**Gross Weight :** 11 kgs  
**Pieces/Box :** 1 pc  
**Boxes/Pallet :** 75 Pcs  
**Shelflife :** 12 Month  
**Pack Barcode:** 8690103191013



### 10 Kgs Tin Black Olives in Brine 261-290 pcs/kgs - M - SÜPER

**Net Weight :** 14,6 kgs  
**Drained Weight :** 10 kgs  
**Gross Weight :** 15,45 kgs  
**Pieces/Box :** 1 pc  
**Boxes/Pallet :** 45 Pcs  
**Shelflife :** 24 Month  
**Pack Barcode:** 8690103161016



### 10 Kgs Tin Oil Cured Black Olives 261-290 pcs/kgs - M - SÜPER

**Net Weight :** 10,15 kgs  
**Drained Weight :** 10 kgs  
**Gross Weight :** 11 kgs  
**Pieces/Box :** 1 pc  
**Boxes/Pallet :** 75 Pcs  
**Shelflife :** 12 Month  
**Pack Barcode:** 8690103000032



### 10 Kgs Tin Black Olives in Brine 291-320 pcs/kgs - S - HUSUSİ

**Net Weight :** 14,6 kgs  
**Drained Weight :** 10 kgs  
**Gross Weight :** 15,45 kgs  
**Pieces/Box :** 1 pc  
**Boxes/Pallet :** 45 Pcs  
**Shelflife :** 24 Month  
**Pack Barcode:** 8690103112018



### 10 Kgs Tin Oil Cured Black Olives 291-320 pcs/kgs - S - HUSUSİ

**Net Weight :** 10,15 kgs  
**Drained Weight :** 10 kgs  
**Gross Weight :** 11 kgs  
**Pieces/Box :** 1 pc  
**Boxes/Pallet :** 75 Pcs  
**Shelflife :** 12 Month  
**Pack Barcode:** 8690103192010



### 10 Kgs Tin Purple Olives in Brine 291-320 pcs/kgs - S - İRİBOY

**Net Weight :** 14,6 kgs  
**Drained Weight :** 10 kgs  
**Gross Weight :** 15,45 kgs  
**Pieces/Box :** 1 pc  
**Boxes/Pallet :** 45 Pcs  
**Shelflife :** 24 Month  
**Pack Barcode:** 8690103990029



### 10 Kgs Tin Oil Cured Purple Olives 291-320 pcs/kgs - S - İRİBOY

**Net Weight :** 10,15 kgs  
**Drained Weight :** 10 kgs  
**Gross Weight :** 11 kgs  
**Pieces/Box :** 1 pc  
**Boxes/Pallet :** 75 Pcs  
**Shelflife :** 12 Month  
**Pack Barcode:** 8690103880023



**10 Kgs Tin Black Olives in Brine**  
**291-320 pcs/kgs - S - HUSUSİ**

Net Weight : 14,6 kgs  
 Drained Weight : 10 kgs  
 Gross Weight : 15,45 kgs  
 Pieces/Box : 1 pc  
 Boxes/Pallet : 45 Pcs  
 Shelflife : 24 Month  
 Pack Barcode: 8690103162013



**10 Kgs Tin Oil Cured Black Olives**  
**291-320 pcs/kgs - S - HUSUSİ**

Net Weight : 10,15 kgs  
 Drained Weight : 10 kgs  
 Gross Weight : 11 kgs  
 Pieces/Box : 1 pc  
 Boxes/Pallet : 75 Pcs  
 Shelflife : 12 Month  
 Pack Barcode: 8690103900066



**10 Kgs Tin Purple Olives in Brine**  
**291-320 pcs/kgs - S - İRİBOY**

Net Weight : 14,6 kgs  
 Drained Weight : 10 kgs  
 Gross Weight : 15,45 kgs  
 Pieces/Box : 1 pc  
 Boxes/Pallet : 45 Pcs  
 Shelflife : 24 Month  
 Pack Barcode: 8690103600034



**10 Kgs Tin Oil Cured Purple Olives**  
**291-320 pcs/kgs - S - İRİBOY**

Net Weight : 10,15 kgs  
 Drained Weight : 10 kgs  
 Gross Weight : 11 kgs  
 Pieces/Box : 1 pc  
 Boxes/Pallet : 75 Pcs  
 Shelflife : 12 Month  
 Pack Barcode: 8690103600072



**10 Kgs Tin Black Olives in Brine**  
**321-350 pcs/kgs - XS - EXTRA**

Net Weight : 14,6 kgs  
 Drained Weight : 10 kgs  
 Gross Weight : 15,45 kgs  
 Pieces/Box : 1 pc  
 Boxes/Pallet : 45 Pcs  
 Shelflife : 24 Month  
 Pack Barcode: 8690103113015



**10 Kgs Tin Oil Cured Black Olives**  
**321-350 pcs/kgs - XS - EXTRA**

Net Weight : 10,15 kgs  
 Drained Weight : 10 kgs  
 Gross Weight : 11 kgs  
 Pieces/Box : 1 pc  
 Boxes/Pallet : 75 Pcs  
 Shelflife : 12 Month  
 Pack Barcode: 8690103193017



**10 Kgs Tin Black Olives in Brine**  
**321-350 pcs/kgs - XS - EXTRA**

Net Weight : 14,6 kgs  
 Drained Weight : 10 kgs  
 Gross Weight : 15,45 kgs  
 Pieces/Box : 1 pc  
 Boxes/Pallet : 45 Pcs  
 Shelflife : 24 Month  
 Pack Barcode: 8690103163010



**10 Kgs Tin Oil Cured Black Olives**  
**321-350 pcs/kgs - XS - EXTRA**

Net Weight : 10,15 kgs  
 Drained Weight : 10 kgs  
 Gross Weight : 11 kgs  
 Pieces/Box : 1 pc  
 Boxes/Pallet : 75 Pcs  
 Shelflife : 12 Month  
 Pack Barcode: 8690103000087



**10 Kgs Tin Black Olives in Brine**  
**351-380 pcs/kgs - 2XS - ELİT**

Net Weight : 14,6 kgs  
 Drained Weight : 10 kgs  
 Gross Weight : 15,45 kgs  
 Pieces/Box : 1 pc  
 Boxes/Pallet : 45 Pcs  
 Shelflife : 24 Month  
 Pack Barcode: 8690103118010



**10 Kgs Tin Oil Cured Black Olives**  
**351-380 pcs/kgs - 2XS - ELİT**

Net Weight : 10,15 kgs  
 Drained Weight : 10 kgs  
 Gross Weight : 11 kgs  
 Pieces/Box : 1 pc  
 Boxes/Pallet : 75 Pcs  
 Shelflife : 12 Month  
 Pack Barcode: 8690103198012

10 KGS TINS



**10 Kgs Tin Purple Olives in Brine  
351-380 pcs/kgs - 2XS - ORTABOY**

**Net Weight :** 14,6 kgs  
**Drained Weight :** 10 kgs  
**Gross Weight :** 15,45 kgs  
**Pieces/Box :** 1 pc  
**Boxes/Pallet :** 45 Pcs  
**Shelflife :** 24 Month  
**Pack Barcode:** 8690103990036



**10 Kgs Tin Oil Cured Purple Olives  
351-380 pcs/kgs - 2XS - ORTABOY**

**Net Weight :** 10,15 kgs  
**Drained Weight :** 10 kgs  
**Gross Weight :** 11 kgs  
**Pieces/Box :** 1 pc  
**Boxes/Pallet :** 75 Pcs  
**Shelflife :** 12 Month  
**Pack Barcode:** 8690103880030



**10 Kgs Tin Black Olives in Brine  
351-380 pcs/kgs - 2XS - ELİT**

**Net Weight :** 14,6 kgs  
**Drained Weight :** 10 kgs  
**Gross Weight :** 15,45 kgs  
**Pieces/Box :** 1 pc  
**Boxes/Pallet :** 45 Pcs  
**Shelflife :** 24 Month  
**Pack Barcode:** 8690103168015



**10 Kgs Tin Oil Cured Black Olives  
351-380 pcs/kgs - 2XS - ELİT**

**Net Weight :** 10,15 kgs  
**Drained Weight :** 10 kgs  
**Gross Weight :** 11 kgs  
**Pieces/Box :** 1 pc  
**Boxes/Pallet :** 75 Pcs  
**Shelflife :** 12 Month  
**Pack Barcode:** 8690103900097



**10 Kgs Tin Purple Olives in Brine  
351-380 pcs/kgs - 2XS - ORTABOY**

**Net Weight :** 14,6 kgs  
**Drained Weight :** 10 kgs  
**Gross Weight :** 15,45 kgs  
**Pieces/Box :** 1 pc  
**Boxes/Pallet :** 45 Pcs  
**Shelflife :** 24 Month  
**Pack Barcode:** 8690103600041



**10 Kgs Tin Oil Cured Purple Olives  
351-380 pcs/kgs - 2XS - ORTABOY**

**Net Weight :** 10,15 kgs  
**Drained Weight :** 10 kgs  
**Gross Weight :** 11 kgs  
**Pieces/Box :** 1 pc  
**Boxes/Pallet :** 75 Pcs  
**Shelflife :** 12 Month  
**Pack Barcode:** 8690103600089



**10 Kgs Tin Black Olives in Brine  
381-410 pcs/kgs - 3XS - LÜKS**

**Net Weight :** 14,6 kgs  
**Drained Weight :** 10 kgs  
**Gross Weight :** 15,45 kgs  
**Pieces/Box :** 1 pc  
**Boxes/Pallet :** 45 Pcs  
**Shelflife :** 24 Month  
**Pack Barcode:** 8690103114012



**10 Kgs Tin Oil Cured Black Olives  
381-410 pcs/kgs - 3XS - LÜKS**

**Net Weight :** 10,15 kgs  
**Drained Weight :** 10 kgs  
**Gross Weight :** 11 kgs  
**Pieces/Box :** 1 pc  
**Boxes/Pallet :** 75 Pcs  
**Shelflife :** 12 Month  
**Pack Barcode:** 8690103194014



**10 Kgs Tin Black Olives in Brine  
381-410 pcs/kgs - 3XS - LÜKS**

**Net Weight :** 14,6 kgs  
**Drained Weight :** 10 kgs  
**Gross Weight :** 15,45 kgs  
**Pieces/Box :** 1 pc  
**Boxes/Pallet :** 45 Pcs  
**Shelflife :** 24 Month  
**Pack Barcode:** 8690103164017



**10 Kgs Tin Oil Cured Black Olives  
381-410 pcs/kgs - 3XS - LÜKS**

**Net Weight :** 10,15 kgs  
**Drained Weight :** 10 kgs  
**Gross Weight :** 11 kgs  
**Pieces/Box :** 1 pc  
**Boxes/Pallet :** 75 Pcs  
**Shelflife :** 12 Month  
**Pack Barcode:** 8690103900073



**10 Kgs Tin Black Olives in Brine**  
**411-460 pcs/kgs - 4XS - MİNYON**

**Net Weight :** 14,6 kgs  
**Drained Weight :** 10 kgs  
**Gross Weight :** 15,45 kgs  
**Pieces/Box :** 1 pc  
**Boxes/Pallet :** 45 Pcs  
**Shelflife :** 24 Month  
**Pack Barcode:** 8690103115019



**10 Kgs Tin Oil Cured Black Olives**  
**411-460 pcs/kgs - 4XS - MİNYON**

**Net Weight :** 10,15 kgs  
**Drained Weight :** 10 kgs  
**Gross Weight :** 11 kgs  
**Pieces/Box :** 1 pc  
**Boxes/Pallet :** 75 Pcs  
**Shelflife :** 12 Month  
**Pack Barcode:** 8690103195011



**10 Kgs Tin Purple Olives in Brine**  
**411-460 pcs/kgs - 4XS - MİNIKBOY**

**Net Weight :** 14,6 kgs  
**Drained Weight :** 10 kgs  
**Gross Weight :** 15,45 kgs  
**Pieces/Box :** 1 pc  
**Boxes/Pallet :** 45 Pcs  
**Shelflife :** 24 Month  
**Pack Barcode:** 8690103990043



**10 Kgs Tin Oil Cured Purple Olives**  
**411-460 pcs/kgs - 4XS - MİNIKBOY**

**Net Weight :** 10,15 kgs  
**Drained Weight :** 10 kgs  
**Gross Weight :** 11 kgs  
**Pieces/Box :** 1 pc  
**Boxes/Pallet :** 75 Pcs  
**Shelflife :** 12 Month  
**Pack Barcode:** 8690103880047



**10 Kgs Tin Black Olives in Brine**  
**411-460 pcs/kgs - 4XS - MİNYON**

**Net Weight :** 14,6 kgs  
**Drained Weight :** 10 kgs  
**Gross Weight :** 15,45 kgs  
**Pieces/Box :** 1 pc  
**Boxes/Pallet :** 45 Pcs  
**Shelflife :** 24 Month  
**Pack Barcode:** 8690103165014



**10 Kgs Tin Oil Cured Black Olives**  
**411-460 pcs/kgs - 4XS - MİNYON**

**Net Weight :** 10,15 kgs  
**Drained Weight :** 10 kgs  
**Gross Weight :** 11 kgs  
**Pieces/Box :** 1 pc  
**Boxes/Pallet :** 75 Pcs  
**Shelflife :** 12 Month  
**Pack Barcode:** 8690103900080



**10 Kgs Tin Purple Olives in Brine**  
**411-460 pcs/kgs - 4XS - MİNIKBOY**

**Net Weight :** 14,6 kgs  
**Drained Weight :** 10 kgs  
**Gross Weight :** 15,45 kgs  
**Pieces/Box :** 1 pc  
**Boxes/Pallet :** 45 Pcs  
**Shelflife :** 24 Month  
**Pack Barcode:** 8690103600058



**10 Kgs Tin Oil Cured Purple Olives**  
**411-460 pcs/kgs - 4XS - MİNIKBOY**

**Net Weight :** 10,15 kgs  
**Drained Weight :** 10 kgs  
**Gross Weight :** 11 kgs  
**Pieces/Box :** 1 pc  
**Boxes/Pallet :** 75 Pcs  
**Shelflife :** 12 Month  
**Pack Barcode:** 8690103600096

**10 KGS TINS**



**2 Kgs Tin Black Olives in Brine  
231-260 pcs/kgs - L - HİPER**

<b>Net Weight :</b>	3,25 kgs
<b>Drained Weight :</b>	2 kgs
<b>Gross Weight :</b>	3,55 kgs
<b>Pieces/Box :</b>	3 Pcs
<b>Boxes/Pallet :</b>	72 Box
<b>Shelflife :</b>	24 Month
<b>Pack Barcode:</b>	8690103116719
<b>Box Barcode:</b>	08690103166165



**2 Kgs Tin Oil Cured Black Olives  
231-260 pcs/kgs - L - HİPER**

<b>Net Weight :</b>	2,02 kgs
<b>Drained Weight :</b>	2 kgs
<b>Gross Weight :</b>	2,3 kgs
<b>Pieces/Box :</b>	3 Pcs
<b>Boxes/Pallet :</b>	81 Box
<b>Shelflife :</b>	12 Month
<b>Pack Barcode:</b>	8690103196711
<b>Box Barcode:</b>	08690103967151



**2 Kgs Tin Black Olives in Brine  
231-260 pcs/kgs - L - HİPER**

<b>Net Weight :</b>	3,25 kgs
<b>Drained Weight :</b>	2 kgs
<b>Gross Weight :</b>	3,55 kgs
<b>Pieces/Box :</b>	3 Pcs
<b>Boxes/Pallet :</b>	72 Box
<b>Shelflife :</b>	24 Month
<b>Pack Barcode:</b>	8690103266711
<b>Box Barcode:</b>	08690103026612



**2 Kgs Tin Oil Cured Black Olives  
231-260 pcs/kgs - L - HİPER**

<b>Net Weight :</b>	2,02 kgs
<b>Drained Weight :</b>	2 kgs
<b>Gross Weight :</b>	2,3 kgs
<b>Pieces/Box :</b>	3 Pcs
<b>Boxes/Pallet :</b>	81 Box
<b>Shelflife :</b>	12 Month
<b>Pack Barcode:</b>	8690103166714
<b>Box Barcode:</b>	08690103667112



**2 Kgs Tin Black Olives in Brine  
291-320 pcs/kgs - S - HUSUSİ**

<b>Net Weight :</b>	3,25 kgs
<b>Drained Weight :</b>	2 kgs
<b>Gross Weight :</b>	3,55 kgs
<b>Pieces/Box :</b>	3 Pcs
<b>Boxes/Pallet :</b>	72 Box
<b>Shelflife :</b>	24 Month
<b>Pack Barcode:</b>	8690103112711
<b>Box Barcode:</b>	08690103126169



**2 Kgs Tin Oil Cured Black Olives  
291-320 pcs/kgs - S - HUSUSİ**

<b>Net Weight :</b>	2,02 kgs
<b>Drained Weight :</b>	2 kgs
<b>Gross Weight :</b>	2,3 kgs
<b>Pieces/Box :</b>	3 Pcs
<b>Boxes/Pallet :</b>	81 Box
<b>Shelflife :</b>	12 Month
<b>Pack Barcode:</b>	8690103192713
<b>Box Barcode:</b>	08690103927155



**2 Kgs Tin Black Olives in Brine  
351-380 pcs/kgs - 2XS - ELİT**

<b>Net Weight :</b>	3,25 kgs
<b>Drained Weight :</b>	2 kgs
<b>Gross Weight :</b>	3,55 kgs
<b>Pieces/Box :</b>	3 Pcs
<b>Boxes/Pallet :</b>	72 Box
<b>Shelflife :</b>	24 Month
<b>Pack Barcode:</b>	8690103118713
<b>Box Barcode:</b>	08690103187160



**2 Kgs Tin Oil Cured Black Olives  
351-380 pcs/kgs - 2XS - ELİT**

<b>Net Weight :</b>	2,02 kgs
<b>Drained Weight :</b>	2 kgs
<b>Gross Weight :</b>	2,3 kgs
<b>Pieces/Box :</b>	3 Pcs
<b>Boxes/Pallet :</b>	81 Box
<b>Shelflife :</b>	12 Month
<b>Pack Barcode:</b>	8690103198715
<b>Box Barcode:</b>	08690103987166



**2 Kgs Tin Purple Olives in Brine  
351-380 pcs/kgs - 2XS - ORTABOY**

<b>Net Weight :</b>	3,25 kgs
<b>Drained Weight :</b>	2 kgs
<b>Gross Weight :</b>	3,55 kgs
<b>Pieces/Box :</b>	3 Pcs
<b>Boxes/Pallet :</b>	72 Box
<b>Shelflife :</b>	24 Month
<b>Pack Barcode:</b>	8690103992238
<b>Box Barcode:</b>	08690103922365



**2 Kgs Tin Oil Cured Purple Olives  
351-380 pcs/kgs - 2XS - ORTABOY**

<b>Net Weight :</b>	2,02 kgs
<b>Drained Weight :</b>	2 kgs
<b>Gross Weight :</b>	2,3 kgs
<b>Pieces/Box :</b>	3 Pcs
<b>Boxes/Pallet :</b>	81 Box
<b>Shelflife :</b>	12 Month
<b>Pack Barcode:</b>	8690103882232
<b>Box Barcode:</b>	08690103822368



**2 Kgs Tin Black Olives in Brine**  
351-380 pcs/kgs - 2XS - ELİT

<b>Net Weight :</b>	3,25 kgs
<b>Drained Weight :</b>	2 kgs
<b>Gross Weight :</b>	3,55 kgs
<b>Pieces/Box :</b>	3 Pcs
<b>Boxes/Pallet :</b>	72 Box
<b>Shelflife :</b>	24 Month
<b>Pack Barcode:</b>	8690103268715
<b>Box Barcode:</b>	08690103087163



**2 Kgs Tin Oil Cured Black Olives**  
351-380 pcs/kgs - 2XS - ELİT

<b>Net Weight :</b>	2,02 kgs
<b>Drained Weight :</b>	2 kgs
<b>Gross Weight :</b>	2,3 kgs
<b>Pieces/Box :</b>	3 Pcs
<b>Boxes/Pallet :</b>	81 Box
<b>Shelflife :</b>	12 Month
<b>Pack Barcode:</b>	8690103168718
<b>Box Barcode:</b>	08690103687127



**2 Kgs Tin Purple Olives in Brine**  
351-380 pcs/kgs - 2XS - ELİT

<b>Net Weight :</b>	3,25 kgs
<b>Drained Weight :</b>	2 kgs
<b>Gross Weight :</b>	3,55 kgs
<b>Pieces/Box :</b>	3 Pcs
<b>Boxes/Pallet :</b>	72 Box
<b>Shelflife :</b>	24 Month
<b>Pack Barcode:</b>	8690103600164
<b>Box Barcode:</b>	08690103600171



**2 Kgs Tin Oil Cured Purple Olives**  
351-380 pcs/kgs - 2XS - ELİT

<b>Net Weight :</b>	2,02 kgs
<b>Drained Weight :</b>	2 kgs
<b>Gross Weight :</b>	2,3 kgs
<b>Pieces/Box :</b>	3 Pcs
<b>Boxes/Pallet :</b>	81 Box
<b>Shelflife :</b>	12 Month
<b>Pack Barcode:</b>	8690103600140
<b>Box Barcode:</b>	08690103600157


**800 g Tin Black Olives in Brine**  
**201-230 pcs/kgs - XL - MEGA**

Net Weight :	1,26 kgs
Drained Weight :	800 g
Gross Weight :	1,4 kgs
Pieces/Box :	6 Pcs
Boxes/Pallet :	108 Box
Shelflife :	24 Month
Pack Barcode:	8690103119819
Box Barcode:	08690103198173


**800 g Tin Black Olives in Brine**  
**231-260 pcs/kgs - L - HİPER**

Net Weight :	1,26 kgs
Drained Weight :	800 g
Gross Weight :	1,4 kgs
Pieces/Box :	6 Pcs
Boxes/Pallet :	108 Box
Shelflife :	24 Month
Pack Barcode:	8690103116818
Box Barcode:	08690103168176


**800 g Tin Black Olives in Brine**  
**231-260 pcs/kgs - L - HİPER**

Net Weight :	1,26 kgs
Drained Weight :	800 g
Gross Weight :	1,4 kgs
Pieces/Box :	6 Pcs
Boxes/Pallet :	108 Box
Shelflife :	24 Month
Pack Barcode:	8690103166813
Box Barcode:	08690103668171


**800 g Tin Black Olives in Brine**  
**261-290 pcs/kgs - M - SÜPER**

Net Weight :	1,26 kgs
Drained Weight :	800 g
Gross Weight :	1,4 kgs
Pieces/Box :	6 Pcs
Boxes/Pallet :	108 Box
Shelflife :	24 Month
Pack Barcode:	8690103111813
Box Barcode:	08690103118171


**800 g Tin Black Olives in Brine**  
**321-350 pcs/kgs - XS - EXTRA**

Net Weight :	1,26 kgs
Drained Weight :	800 g
Gross Weight :	1,4 kgs
Pieces/Box :	6 Pcs
Boxes/Pallet :	108 Box
Shelflife :	24 Month
Pack Barcode:	8690103113817
Box Barcode:	08690103138179


**800 g Tin Black Olives in Brine**  
**351-380 pcs/kgs - 2XS - ELİT**

Net Weight :	1,26 kgs
Drained Weight :	800 g
Gross Weight :	1,4 kgs
Pieces/Box :	6 Pcs
Boxes/Pallet :	108 Box
Shelflife :	24 Month
Pack Barcode:	8690103118812
Box Barcode:	08690103188174


**800 g Tin Black Olives in Brine Nostalgia**  
**351-380 pcs/kgs - 2XS - ELİT**

Net Weight :	1,26 kgs
Drained Weight :	800 g
Gross Weight :	1,4 kgs
Pieces/Box :	6 Pcs
Boxes/Pallet :	108 Box
Shelflife :	24 Month
Pack Barcode:	8690103118829
Box Barcode:	08690103188273


**800 g Tin Black Olives in Brine**  
**351-380 pcs/kgs - 2XS - ELİT**

Net Weight :	1,26 kgs
Drained Weight :	800 g
Gross Weight :	1,4 kgs
Pieces/Box :	6 Pcs
Boxes/Pallet :	108 Box
Shelflife :	24 Month
Pack Barcode:	8690103168817
Box Barcode:	08690103688179


**800 g Tin Black Olives in Brine**  
**381-410 pcs/kgs - 3XS - LÜKS**

Net Weight :	1,26 kgs
Drained Weight :	800 g
Gross Weight :	1,4 kgs
Pieces/Box :	6 Pcs
Boxes/Pallet :	108 Box
Shelflife :	24 Month
Pack Barcode:	8690103114814
Box Barcode:	08690103148178



**400 g Tin Scratched Black Olives in Brine  
With Vinegar - 231-260 pcs/kgs - L - HİPER**

<b>Net Weight :</b>	800 g
<b>Drained Weight :</b>	400 g
<b>Gross Weight :</b>	1 kg
<b>Pieces/Box :</b>	6 Pcs
<b>Boxes/Pallet :</b>	132 Box
<b>Shelflife :</b>	24 Month
<b>Pack Barcode:</b>	8690103648012
<b>Box Barcode:</b>	08690103480179



**400 g Tin Black Olives in Brine  
321-350 pcs/kgs - XS - EXTRA**

<b>Net Weight :</b>	800 g
<b>Drained Weight :</b>	400 g
<b>Gross Weight :</b>	1 kg
<b>Pieces/Box :</b>	6 Pcs
<b>Boxes/Pallet :</b>	132 Box
<b>Shelflife :</b>	24 Month
<b>Pack Barcode:</b>	8690103113312
<b>Box Barcode:</b>	08690103133174



**400 g Tin Black Olives in Brine  
381-410 pcs/kgs - 3XS - LÜKS**

<b>Net Weight :</b>	800 g
<b>Drained Weight :</b>	400 g
<b>Gross Weight :</b>	1 kg
<b>Pieces/Box :</b>	6 Pcs
<b>Boxes/Pallet :</b>	132 Box
<b>Shelflife :</b>	24 Month
<b>Pack Barcode:</b>	8690103114319
<b>Box Barcode:</b>	08690103143173

**400 G TINS**

# 800 G VACUUM PACKS



## 800 g Vacuum Packed Black Olives 201-230 pcs/kgs - XL - MEGA

Net Weight :	800 g
Drained Weight :	800 g
Gross Weight :	822 g
Pieces/Box :	12 Pcs
Boxes/Pallet :	60 Box
Shelflife :	24 Month
Pack Barcode:	8690103119437
Box Barcode:	08690103194366



## 800 g Vacuum Packed Black Olives 231-260 pcs/kgs - L - HİPER

Net Weight :	800 g
Drained Weight :	800 g
Gross Weight :	822 g
Pieces/Box :	12 Pcs
Boxes/Pallet :	60 Box
Shelflife :	24 Month
Pack Barcode:	8690103116436
Box Barcode:	08690103164369



## 800 g Vacuum Packed Black Olives 231-260 pcs/kgs - L - HİPER

Net Weight :	800 g
Drained Weight :	800 g
Gross Weight :	822 g
Pieces/Box :	12 Pcs
Boxes/Pallet :	60 Box
Shelflife :	24 Month
Pack Barcode:	8690103166639
Box Barcode:	08690103666368



## 800 g Vacuum Packed Black Olives 261-290 pcs/kgs - M - SÜPER

Net Weight :	800 g
Drained Weight :	800 g
Gross Weight :	822 g
Pieces/Box :	12 Pcs
Boxes/Pallet :	60 Box
Shelflife :	24 Month
Pack Barcode:	8690103111431
Box Barcode:	08690103114364



## 800 g Vacuum Packed Black Olives 261-290 pcs/kgs - M - SÜPER

Net Weight :	800 g
Drained Weight :	800 g
Gross Weight :	822 g
Pieces/Box :	12 Pcs
Boxes/Pallet :	60 Box
Shelflife :	24 Month
Pack Barcode:	8690103161634
Box Barcode:	08690103616363



## 800 g Vacuum Packed Black Olives 291-320 pcs/kgs - S - HUSUSİ

Net Weight :	800 g
Drained Weight :	800 g
Gross Weight :	822 g
Pieces/Box :	12 Pcs
Boxes/Pallet :	60 Box
Shelflife :	24 Month
Pack Barcode:	8690103112438
Box Barcode:	08690103124363



## 800 g Vacuum Packed Black Olives 291-320 pcs/kgs - S - HUSUSİ

Net Weight :	800 g
Drained Weight :	800 g
Gross Weight :	822 g
Pieces/Box :	12 Pcs
Boxes/Pallet :	60 Box
Shelflife :	24 Month
Pack Barcode:	8690103162631
Box Barcode:	08690103626362



## 800 g Vacuum Packed Black Olives 321-350 pcs/kgs - XS - EXTRA

Net Weight :	800 g
Drained Weight :	800 g
Gross Weight :	822 g
Pieces/Box :	12 Pcs
Boxes/Pallet :	60 Box
Shelflife :	24 Month
Pack Barcode:	8690103113435
Box Barcode:	08690103134362



## 800 g Vacuum Packed Black Olives 321-350 pcs/kgs - XS - EXTRA

Net Weight :	800 g
Drained Weight :	800 g
Gross Weight :	822 g
Pieces/Box :	12 Pcs
Boxes/Pallet :	60 Box
Shelflife :	24 Month
Pack Barcode:	8690103163638
Box Barcode:	08690103636361



## 800 g Vacuum Packed Black Olives 351-380 pcs/kgs - 2XS - ELİT

Net Weight :	800 g
Drained Weight :	800 g
Gross Weight :	822 g
Pieces/Box :	12 Pcs
Boxes/Pallet :	60 Box
Shelflife :	24 Month
Pack Barcode:	8690103118430
Box Barcode:	08690103184367



**800 g Vacuum Packed Black Olives**  
**381-410 pcs/kgs - 3XS - LÜKS**

<b>Net Weight :</b>	800 g
<b>Drained Weight :</b>	800 g
<b>Gross Weight :</b>	822 g
<b>Pieces/Box :</b>	12 Pcs
<b>Boxes/Pallet :</b>	60 Box
<b>Shelflife :</b>	24 Month
<b>Pack Barcode:</b>	8690103114432
<b>Box Barcode:</b>	08690103144361



**800 g Vacuum Packed Black Olives**  
**411-460 pcs/kgs - 4XS - MİNYON**

<b>Net Weight :</b>	800 g
<b>Drained Weight :</b>	800 g
<b>Gross Weight :</b>	822 g
<b>Pieces/Box :</b>	12 Pcs
<b>Boxes/Pallet :</b>	60 Box
<b>Shelflife :</b>	24 Month
<b>Pack Barcode:</b>	8690103115439
<b>Box Barcode:</b>	08690103154360

**800 G VACUUM PACKS**

# 500 G VACUUM PACKS



## 500 g Vacuum Packed Black Olives 201-230 pcs/kgs - XL - MEGA

Net Weight :	500 g
Drained Weight :	500 g
Gross Weight :	514 g
Pieces/Box :	24 Pcs
Boxes/Pallet :	54 Box
Shelflife :	24 Month
Pack Barcode:	8690103119536
Box Barcode:	08690103195363



## 500 g Vacuum Packed Black Olives 201-230 pcs/kgs - XL - MEGA

Net Weight :	500 g
Drained Weight :	500 g
Gross Weight :	514 g
Pieces/Box :	24 Pcs
Boxes/Pallet :	54 Box
Shelflife :	24 Month
Pack Barcode:	8690103169531
Box Barcode:	08690103695368



## 500 g Vacuum Packed Black Olives 231-260 pcs/kgs - L - HİPER

Net Weight :	500 g
Drained Weight :	500 g
Gross Weight :	514 g
Pieces/Box :	24 Pcs
Boxes/Pallet :	54 Box
Shelflife :	24 Month
Pack Barcode:	8690103116535
Box Barcode:	08690103165366



## 500 g Vacuum Packed Black Olives 261-290 pcs/kgs - M - SÜPER

Net Weight :	500 g
Drained Weight :	500 g
Gross Weight :	514 g
Pieces/Box :	24 Pcs
Boxes/Pallet :	54 Box
Shelflife :	24 Month
Pack Barcode:	8690103111530
Box Barcode:	08690103115361



## 500 g Vacuum Packed Black Olives 261-290 pcs/kgs - M - SÜPER

Net Weight :	500 g
Drained Weight :	500 g
Gross Weight :	514 g
Pieces/Box :	24 Pcs
Boxes/Pallet :	54 Box
Shelflife :	24 Month
Pack Barcode:	8690103161535
Box Barcode:	08690103615366



## 500 g Vacuum Packed Black Olives 291-320 pcs/kgs - S - HUSUSİ

Net Weight :	500 g
Drained Weight :	500 g
Gross Weight :	514 g
Pieces/Box :	24 Pcs
Boxes/Pallet :	54 Box
Shelflife :	24 Month
Pack Barcode:	8690103112537
Box Barcode:	08690103125360



## 500 g Vacuum Packed Black Olives 321-350 pcs/kgs - XS - EXTRA

Net Weight :	500 g
Drained Weight :	500 g
Gross Weight :	514 g
Pieces/Box :	24 Pcs
Boxes/Pallet :	54 Box
Shelflife :	24 Month
Pack Barcode:	8690103113534
Box Barcode:	08690103135369



## 500 g Vacuum Packed Black Olives 321-350 pcs/kgs - XS - EXTRA

Net Weight :	500 g
Drained Weight :	500 g
Gross Weight :	514 g
Pieces/Box :	24 Pcs
Boxes/Pallet :	54 Box
Shelflife :	24 Month
Pack Barcode:	8690103163539
Box Barcode:	08690103635364



## 500 g Vacuum Packed Black Olives 351-380 pcs/kgs - 2XS - ELİT

Net Weight :	500 g
Drained Weight :	500 g
Gross Weight :	514 g
Pieces/Box :	24 Pcs
Boxes/Pallet :	54 Box
Shelflife :	24 Month
Pack Barcode:	8690103118539
Box Barcode:	08690103185364



## 500 g Vacuum Packed Black Olives 381-410 pcs/kgs - 3XS - LÜKS

Net Weight :	500 g
Drained Weight :	500 g
Gross Weight :	514 g
Pieces/Box :	24 Pcs
Boxes/Pallet :	54 Box
Shelflife :	24 Month
Pack Barcode:	8690103114531
Box Barcode:	08690103145368



**500 g Vacuum Packed Black Olives**  
**411-460 pcs/kgs - 4XS - MINYON**

<b>Net Weight :</b>	500 g
<b>Drained Weight :</b>	500 g
<b>Gross Weight :</b>	514 g
<b>Pieces/Box :</b>	24 Pcs
<b>Boxes/Pallet :</b>	54 Box
<b>Shelflife :</b>	24 Month
<b>Pack Barcode:</b>	8690103115538
<b>Box Barcode:</b>	08690103155367

**500 G VACUUM PACKS**

# 200 G VACUUM PACKS



## 200 g Vacuum Packed Black Olives 231-260 pcs/kgs - L - HİPER

<b>Net Weight :</b>	200 g
<b>Drained Weight :</b>	200 g
<b>Gross Weight :</b>	262 g
<b>Pieces/Box :</b>	24 Pcs
<b>Boxes/Pallet :</b>	78 Box
<b>Shelflife :</b>	24 Month
<b>Pack Barcode:</b>	8690103116238
<b>Box Barcode:</b>	08690103162341



## 200 g Vacuum Packed Black Olives 321-350 pcs/kgs - XS - EXTRA

<b>Net Weight :</b>	200 g
<b>Drained Weight :</b>	200 g
<b>Gross Weight :</b>	262 g
<b>Pieces/Box :</b>	24 Pcs
<b>Boxes/Pallet :</b>	78 Box
<b>Shelflife :</b>	24 Month
<b>Pack Barcode:</b>	8690103113237
<b>Box Barcode:</b>	08690103132344



## 200 g Vacuum Packed Black Olives 321-350 pcs/kgs - XS - EXTRA

<b>Net Weight :</b>	200 g
<b>Drained Weight :</b>	200 g
<b>Gross Weight :</b>	262 g
<b>Pieces/Box :</b>	24 Pcs
<b>Boxes/Pallet :</b>	78 Box
<b>Shelflife :</b>	24 Month
<b>Pack Barcode:</b>	8690103163232
<b>Box Barcode:</b>	08690103632363



## 200 g Vacuum Packed Black Olives 381-410 pcs/kgs - 3XS - LÜKS

<b>Net Weight :</b>	200 g
<b>Drained Weight :</b>	200 g
<b>Gross Weight :</b>	262 g
<b>Pieces/Box :</b>	24 Pcs
<b>Boxes/Pallet :</b>	78 Box
<b>Shelflife :</b>	24 Month
<b>Pack Barcode:</b>	8690103114234
<b>Box Barcode:</b>	08690103142343



**1400 g Pet Package Oil Cured Black Olives  
261-290 pcs/kgs - M - SÜPER**

<b>Net Weight :</b>	1,415 kgs
<b>Drained Weight :</b>	1,4 kgs
<b>Gross Weight :</b>	1,55 kgs
<b>Pieces/Box :</b>	6 Pcs
<b>Boxes/Pallet :</b>	60 Box
<b>Shelflife :</b>	12 Month
<b>Pack Barcode:</b>	8690103910515
<b>Box Barcode:</b>	08690103910119



**1400 g Pet Package Oil Cured Black Olives  
261-290 pcs/kgs - M - SÜPER**

<b>Net Weight :</b>	1,415 kgs
<b>Drained Weight :</b>	1,4 kgs
<b>Gross Weight :</b>	1,55 kgs
<b>Pieces/Box :</b>	6 Pcs
<b>Boxes/Pallet :</b>	60 Box
<b>Shelflife :</b>	12 Month
<b>Pack Barcode:</b>	8690103003767
<b>Box Barcode:</b>	08690103003774



**1400 g Pet Package Oil Cured Purple Olives  
291-320 pcs/kgs - S - İRİBOY**

<b>Net Weight :</b>	1,415 kgs
<b>Drained Weight :</b>	1,4 kgs
<b>Gross Weight :</b>	1,55 kgs
<b>Pieces/Box :</b>	6 Pcs
<b>Boxes/Pallet :</b>	60 Box
<b>Shelflife :</b>	12 Month
<b>Pack Barcode:</b>	8690103003729
<b>Box Barcode:</b>	08690103003736



**1400 g Pet Package Oil Cured Purple Olives  
291-320 pcs/kgs - S - İRİBOY**

<b>Net Weight :</b>	1,415 kgs
<b>Drained Weight :</b>	1,4 kgs
<b>Gross Weight :</b>	1,55 kgs
<b>Pieces/Box :</b>	6 Pcs
<b>Boxes/Pallet :</b>	60 Box
<b>Shelflife :</b>	12 Month
<b>Pack Barcode:</b>	8690103226012
<b>Box Barcode:</b>	08690103226036



**1400 g Pet Package Oil Cured Black Olives  
351-380 pcs/kgs - 2XS - ELİT**

<b>Net Weight :</b>	1,415 kgs
<b>Drained Weight :</b>	1,4 kgs
<b>Gross Weight :</b>	1,55 kgs
<b>Pieces/Box :</b>	6 Pcs
<b>Boxes/Pallet :</b>	60 Box
<b>Shelflife :</b>	12 Month
<b>Pack Barcode:</b>	8690103910881
<b>Box Barcode:</b>	08690103910898

**1400 G PET PACKS**



## 950 g Pet Package Oil Cured Black Olives 261-290 pcs/kgs - M - SÜPER

Net Weight :	965 g
Drained Weight :	950 g
Gross Weight :	1,1 kgs
Pieces/Box :	6 Pcs
Boxes/Pallet :	80 Box
Shelflife :	12 Month
Pack Barcode:	8690103910614
Box Barcode:	08690103910218



## 950 g Pet Package Oil Cured Black Olives 261-290 pcs/kgs - M - SÜPER

Net Weight :	965 g
Drained Weight :	950 g
Gross Weight :	1,1 kgs
Pieces/Box :	6 Pcs
Boxes/Pallet :	80 Box
Shelflife :	12 Month
Pack Barcode:	8690103003743
Box Barcode:	08690103003750



## 950 g Pet Package Oil Cured Purple Olives 291-320 pcs/kgs - S - İRİBOY

Net Weight :	965 g
Drained Weight :	950 g
Gross Weight :	1,1 kgs
Pieces/Box :	6 Pcs
Boxes/Pallet :	80 Box
Shelflife :	12 Month
Pack Barcode:	8690103003705
Box Barcode:	08690103003712



## 950 g Pet Package Oil Cured Purple Olives 291-320 pcs/kgs - S - İRİBOY

Net Weight :	965 g
Drained Weight :	950 g
Gross Weight :	1,1 kgs
Pieces/Box :	6 Pcs
Boxes/Pallet :	80 Box
Shelflife :	12 Month
Pack Barcode:	8690103763456
Box Barcode:	08690103634572



## 950 g Pet Package Oil Cured Black Olives 351-380 pcs/kgs - 2XS - ELİT

Net Weight :	965 g
Drained Weight :	950 g
Gross Weight :	1,1 kgs
Pieces/Box :	6 Pcs
Boxes/Pallet :	80 Box
Shelflife :	12 Month
Pack Barcode:	8690103910782
Box Barcode:	08690103910799



**1,5 Kgs Jar Oil Cured Black Olives  
261-290 pcs/kgs - M - SÜPER**

Net Weight :	1,52 kgs
Drained Weight :	1,5 kgs
Gross Weight :	2,67 kgs
Pieces/Box :	4 Pcs
Boxes/Pallet :	60 Box
Shelflife :	12 Month
Pack Barcode:	8690103100473
Box Barcode:	08690103100480



**1,5 Kgs Jar Oil Cured Black Olives  
381-410 pcs/kgs - 3XS - LÜKS**

Net Weight :	1,52 kgs
Drained Weight :	1,5 kgs
Gross Weight :	2,67 kgs
Pieces/Box :	4 Pcs
Boxes/Pallet :	60 Box
Shelflife :	12 Month
Pack Barcode:	8690103000193
Box Barcode:	08690103000209



**1 Kg Jar Oil Cured Black Olives  
261-290 pcs/kgs - M - SÜPER**

Net Weight :	1,015 kgs
Drained Weight :	1 kg
Gross Weight :	1,8 kgs
Pieces/Box :	6 Pcs
Boxes/Pallet :	60 Box
Shelflife :	12 Month
Pack Barcode:	8690103100428
Box Barcode:	08690103100435



**1 Kg Jar Oil Cured Black Olives  
381-410 pcs/kgs - 3XS - LÜKS**

Net Weight :	1,015 kgs
Drained Weight :	1 kg
Gross Weight :	1,8 kgs
Pieces/Box :	6 Pcs
Boxes/Pallet :	60 Box
Shelflife :	12 Month
Pack Barcode:	8690103100411
Box Barcode:	08690103010413



**500 g Jar Oil Cured Black Olives  
261-290 pcs/kgs - M - SÜPER**

Net Weight :	510 g
Drained Weight :	500 g
Gross Weight :	825 g
Pieces/Box :	6 Pcs
Boxes/Pallet :	144 Box
Shelflife :	12 Month
Pack Barcode:	8690103100626
Box Barcode:	08690103100633



**500 g Jar Oil Cured Black Olives  
381-410 pcs/kgs - 3XS - LÜKS**

Net Weight :	510 g
Drained Weight :	500 g
Gross Weight :	825 g
Pieces/Box :	6 Pcs
Boxes/Pallet :	144 Box
Shelflife :	12 Month
Pack Barcode:	8690103100640
Box Barcode:	08690103100657



**350 g Jar Sauced Olives**

Net Weight :	350 g
Drained Weight :	- g
Gross Weight :	575 g
Pieces/Box :	6 Pcs
Boxes/Pallet :	192 Box
Shelflife :	18 Month
Pack Barcode:	8690103003118
Box Barcode:	08690103103009



**800 g Tin Black Olives in Brine  
201-230 pcs/kgs - XL - MEGA**

<b>Net Weight :</b>	1,26 kgs
<b>Drained Weight :</b>	800 g
<b>Gross Weight :</b>	1,4 kgs
<b>Pieces/Box :</b>	6 Pcs
<b>Boxes/Pallet :</b>	108 Box
<b>Shelflife :</b>	24 Month
<b>Pack Barcode:</b>	8690103279810
<b>Box Barcode:</b>	08690103798151



**800 g Tin Black Olives in Brine  
261-290 pcs/kgs - M - SÜPER**

<b>Net Weight :</b>	1,26 kgs
<b>Drained Weight :</b>	800 g
<b>Gross Weight :</b>	1,4 kgs
<b>Pieces/Box :</b>	6 Pcs
<b>Boxes/Pallet :</b>	108 Box
<b>Shelflife :</b>	24 Month
<b>Pack Barcode:</b>	8690103279827
<b>Box Barcode:</b>	08690103798168



**400 g Tin Black Olives in Brine  
201-230 pcs/kgs - XL - MEGA**

<b>Net Weight :</b>	800 g
<b>Drained Weight :</b>	400 g
<b>Gross Weight :</b>	1 kgs
<b>Pieces/Box :</b>	6 Pcs
<b>Boxes/Pallet :</b>	132 Box
<b>Shelflife :</b>	24 Month
<b>Pack Barcode:</b>	8690103279315
<b>Box Barcode:</b>	08690103793156



**400 g Tin Black Olives in Brine  
261-290 pcs/kgs - M - SÜPER**

<b>Net Weight :</b>	800 g
<b>Drained Weight :</b>	400 g
<b>Gross Weight :</b>	1 kgs
<b>Pieces/Box :</b>	6 Pcs
<b>Boxes/Pallet :</b>	132 Box
<b>Shelflife :</b>	24 Month
<b>Pack Barcode:</b>	8690103279414
<b>Box Barcode:</b>	08690103279483



**5 Kgs Tin Less Salty Black Olives in Brine  
291-320 pcs/kgs - S - HUSUSİ**

<b>Net Weight :</b>	8,5 kgs
<b>Drained Weight :</b>	5 kgs
<b>Gross Weight :</b>	9,04 kgs
<b>Pieces/Box :</b>	1 pc
<b>Boxes/Pallet :</b>	96 Pcs
<b>Shelflife :</b>	24 Month
<b>Pack Barcode:</b>	8690103 172913



**800 g Tin Less Salty Black Olives in Brine  
201-230 pcs/kgs - XL - MEGA**

<b>Net Weight :</b>	1,26 kgs
<b>Drained Weight :</b>	800 g
<b>Gross Weight :</b>	1,4 kgs
<b>Pieces/Box :</b>	6 Pcs
<b>Boxes/Pallet :</b>	108 Box
<b>Shelflife :</b>	24 Month
<b>Pack Barcode:</b>	8690103179813
<b>Box Barcode:</b>	08690103798175



**800 g Tin Less Salty Black Olives in Brine  
291-320 pcs/kgs - S - HUSUSİ**

<b>Net Weight :</b>	1,26 kgs
<b>Drained Weight :</b>	800 g
<b>Gross Weight :</b>	1,4 kgs
<b>Pieces/Box :</b>	6 Pcs
<b>Boxes/Pallet :</b>	108 Box
<b>Shelflife :</b>	24 Month
<b>Pack Barcode:</b>	8690103172814
<b>Box Barcode:</b>	08690103728172



**400 g Tin Less Salty Black Olives in Brine  
201-230 pcs/kgs - XL - MEGA**

<b>Net Weight :</b>	800 g
<b>Drained Weight :</b>	400 g
<b>Gross Weight :</b>	1 kgs
<b>Pieces/Box :</b>	6 Pcs
<b>Boxes/Pallet :</b>	132 Box
<b>Shelflife :</b>	24 Month
<b>Pack Barcode:</b>	8690103179318
<b>Box Barcode:</b>	08690103793170



**400 g Tin Less Salty Black Olives in Brine  
291-320 pcs/kgs - S - HUSUSİ**

<b>Net Weight :</b>	800 g
<b>Drained Weight :</b>	400 g
<b>Gross Weight :</b>	1 kgs
<b>Pieces/Box :</b>	6 Pcs
<b>Boxes/Pallet :</b>	132 Box
<b>Shelflife :</b>	24 Month
<b>Pack Barcode:</b>	8690103172319
<b>Box Barcode:</b>	08690103723177

# DRIED BLACK OLIVES SERIES



## 5 Kgs Tin Dried Black Olives 291-320 pcs/kgs - S - HUSUSI

Net Weight :	5,08 kgs
Drained Weight :	5 kgs
Gross Weight :	5,66 kgs
Pieces/Box :	1 pc
Boxes/Pallet :	120 Pcs
Shelflife :	12 Month
Pack Barcode:	8690103102910



## 5 Kgs Tin Dried Black Olives 381-410 pcs/kgs - 3XS - LÜKS

Net Weight :	5,08 kgs
Drained Weight :	5 kgs
Gross Weight :	5,66 kgs
Pieces/Box :	1 pc
Boxes/Pallet :	120 Pcs
Shelflife :	12 Month
Pack Barcode:	8690103104914



## 800 g Pet Package Dried Black Olives 291-320 pcs/kgs - S - HUSUSI

Net Weight :	815 g
Drained Weight :	800 g
Gross Weight :	870 g
Pieces/Box :	6 Pcs
Boxes/Pallet :	77 Box
Shelflife :	18 Month
Pack Barcode:	8690103292888
Box Barcode:	08690103928879



## 800 g Pet Package Dried Black Olives 381-410 pcs/kgs - 3XS - LÜKS

Net Weight :	815 g
Drained Weight :	800 g
Gross Weight :	870 g
Pieces/Box :	6 Pcs
Boxes/Pallet :	77 Box
Shelflife :	18 Month
Pack Barcode:	8690103294882
Box Barcode:	08690103948860



## 400 g Pet Package Dried Black Olives 291-320 pcs/kgs - S - HUSUSI

Net Weight :	410 g
Drained Weight :	400 g
Gross Weight :	450 g
Pieces/Box :	12 Pcs
Boxes/Pallet :	80 Box
Shelflife :	18 Month
Pack Barcode:	8690103292383
Box Barcode:	08690103923775



## 400 g Pet Package Dried Black Olives 381-410 pcs/kgs - 3XS - LÜKS

Net Weight :	410 g
Drained Weight :	400 g
Gross Weight :	450 g
Pieces/Box :	12 Pcs
Boxes/Pallet :	80 Box
Shelflife :	18 Month
Pack Barcode:	8690103294387
Box Barcode:	08690103943865



## 400 g Seasoned Oil Cured Black Olives 351-380 pcs/kgs - 2XS - ELİT

Net Weight :	420 g
Drained Weight :	400 g
Gross Weight :	450 g
Pieces/Box :	12 Pcs
Boxes/Pallet :	80 Box
Shelflife :	18 Month
Pack Barcode:	8690103291386
Box Barcode:	08690103913813



**285 g Jar Less Salty Black Olives in Brine**  
291-320 pcs/kgs - S - HUSUSİ

<b>Net Weight :</b>	495 g
<b>Drained Weight :</b>	285 g
<b>Gross Weight :</b>	750 g
<b>Pieces/Box :</b>	12 Pcs
<b>Boxes/Pallet :</b>	96 Box
<b>Shelflife :</b>	24 Month
<b>Pack Barcode:</b>	8690103000285
<b>Box Barcode:</b>	08690103000292



**285 g Jar Green Olives Stuffed With Carrot**  
201-230 pcs/kgs - XL - MEGA

<b>Net Weight :</b>	495 g
<b>Drained Weight :</b>	285 g
<b>Gross Weight :</b>	750 g
<b>Pieces/Box :</b>	12 Pcs
<b>Boxes/Pallet :</b>	96 Box
<b>Shelflife :</b>	24 Month
<b>Pack Barcode:</b>	8690103000308
<b>Box Barcode:</b>	08690103000315



**250 ml Glass Bottle Extra Virgin Olive Oil**

<b>Net Weight :</b>	250 ml
<b>Gross Weight :</b>	443 g
<b>Pieces/Box :</b>	12 Pcs
<b>Boxes/Pallet :</b>	95 Box
<b>Shelflife :</b>	24 Month
<b>Pack Barcode:</b>	8690103000230
<b>Box Barcode:</b>	08690103000247



**175 g Jar Unseasoned Olive Paste**

<b>Net Weight :</b>	175 g
<b>Drained Weight :</b>	175 g
<b>Gross Weight :</b>	300 g
<b>Pieces/Box :</b>	12 Pcs
<b>Boxes/Pallet :</b>	228 Box
<b>Shelflife :</b>	24 Month
<b>Pack Barcode:</b>	8690103000216
<b>Box Barcode:</b>	08690103000223



**Pepee 3 pcs Special Box**

<b>Net Weight :</b>	4,66 kgs
<b>Drained Weight :</b>	2,98 kgs
<b>Gross Weight :</b>	8,8 kgs
<b>Pieces/Box :</b>	4 Pcs
<b>Boxes/Pallet :</b>	56 Box
<b>Shelflife :</b>	24 Month
<b>Pack Barcode:</b>	8690103000322
<b>Box Barcode:</b>	08690103000278

# EXTRA VIRGIN OLIVE OIL



## 250 ml Glass Bottle Extra Virgin Olive Oil

<b>Net Weight :</b>	250 ml
<b>Gross Weight :</b>	443 g
<b>Pieces/Box :</b>	12 Pcs
<b>Boxes/Pallet :</b>	95 Box
<b>Shelflife :</b>	24 Month
<b>Pack Barcode:</b>	8690103142060
<b>Box Barcode:</b>	08690103420670



## 250 ml Pet Bottle Extra Virgin Olive Oil

<b>Net Weight :</b>	250 ml
<b>Gross Weight :</b>	258 g
<b>Pieces/Box :</b>	12 Pcs
<b>Boxes/Pallet :</b>	95 Box
<b>Shelflife :</b>	24 Month
<b>Pack Barcode:</b>	8690103142084
<b>Box Barcode:</b>	08690103420861



## 500 ml Glass Bottle Extra Virgin Olive Oil

<b>Net Weight :</b>	500 ml
<b>Gross Weight :</b>	865 g
<b>Pieces/Box :</b>	12 Pcs
<b>Boxes/Pallet :</b>	65 Box
<b>Shelflife :</b>	24 Month
<b>Pack Barcode:</b>	8690103142565
<b>Box Barcode:</b>	08690103425668



## 500 ml Pet Bottle Extra Virgin Olive Oil

<b>Net Weight :</b>	500 ml
<b>Gross Weight :</b>	495 g
<b>Pieces/Box :</b>	12 Pcs
<b>Boxes/Pallet :</b>	65 Box
<b>Shelflife :</b>	24 Month
<b>Pack Barcode:</b>	8690103142589
<b>Box Barcode:</b>	08690103426863



## 500 ml Elegant Glass Bottle Extra Virgin Olive Oil

<b>Net Weight :</b>	500 ml
<b>Gross Weight :</b>	865 g
<b>Pieces/Box :</b>	12 Pcs
<b>Boxes/Pallet :</b>	65 Box
<b>Shelflife :</b>	24 Month
<b>Pack Barcode:</b>	8690103142862
<b>Box Barcode:</b>	08690103428669



## 1000 ml Glass Bottle Extra Virgin Olive Oil

<b>Net Weight :</b>	1000 ml
<b>Gross Weight :</b>	1,52 kgs
<b>Pieces/Box :</b>	12 Pcs
<b>Boxes/Pallet :</b>	35 Box
<b>Shelflife :</b>	24 Month
<b>Pack Barcode:</b>	8690103142664
<b>Box Barcode:</b>	08690103426665



## 1000 ml Pet Bottle Extra Virgin Olive Oil

<b>Net Weight :</b>	1000 ml
<b>Gross Weight :</b>	970 g
<b>Pieces/Box :</b>	12 Pcs
<b>Boxes/Pallet :</b>	50 Box
<b>Shelflife :</b>	24 Month
<b>Pack Barcode:</b>	8690103142688
<b>Box Barcode:</b>	08690103425866



## 2000 ml Pet Bottle Extra Virgin Olive Oil

<b>Net Weight :</b>	2000 ml
<b>Gross Weight :</b>	1,9 kgs
<b>Pieces/Box :</b>	6 Pcs
<b>Boxes/Pallet :</b>	50 Box
<b>Shelflife :</b>	24 Month
<b>Pack Barcode:</b>	8690103142886
<b>Box Barcode:</b>	08690103428867



## 3000 ml Tin Extra Virgin Olive Oil

<b>Net Weight :</b>	3000 ml
<b>Gross Weight :</b>	3,06 kgs
<b>Pieces/Box :</b>	6 Pcs
<b>Boxes/Pallet :</b>	48 Box
<b>Shelflife :</b>	24 Month
<b>Pack Barcode:</b>	8690103142312
<b>Box Barcode:</b>	08690103423176



## 5000 ml Tin Extra Virgin Olive Oil

<b>Net Weight :</b>	5000 ml
<b>Gross Weight :</b>	4,963 kgs
<b>Pieces/Box :</b>	4 Pcs
<b>Boxes/Pallet :</b>	50 Box
<b>Shelflife :</b>	24 Month
<b>Pack Barcode:</b>	8690103142916
<b>Box Barcode:</b>	08690103429178



### 250 ml Glass Bottle Riviera Olive Oil

<b>Net Weight :</b>	250 ml
<b>Gross Weight :</b>	443 g
<b>Pieces/Box :</b>	12 Pcs
<b>Boxes/Pallet :</b>	95 Box
<b>Shelflife :</b>	24 Month
<b>Pack Barcode:</b>	8690103141063
<b>Box Barcode:</b>	08690103410671



### 250 ml Pet Bottle Riviera Olive Oil

<b>Net Weight :</b>	250 ml
<b>Gross Weight :</b>	443 g
<b>Pieces/Box :</b>	12 Pcs
<b>Boxes/Pallet :</b>	95 Box
<b>Shelflife :</b>	24 Month
<b>Pack Barcode:</b>	8690103141087
<b>Box Barcode:</b>	08690103410862



### 500 ml Glass Bottle Riviera Olive Oil

<b>Net Weight :</b>	500 ml
<b>Gross Weight :</b>	865 g
<b>Pieces/Box :</b>	12 Pcs
<b>Boxes/Pallet :</b>	65 Box
<b>Shelflife :</b>	24 Month
<b>Pack Barcode:</b>	8690103141568
<b>Box Barcode:</b>	08690103415669



### 500 ml Pet Bottle Riviera Olive Oil

<b>Net Weight :</b>	500 ml
<b>Gross Weight :</b>	495 g
<b>Pieces/Box :</b>	12 Pcs
<b>Boxes/Pallet :</b>	65 Box
<b>Shelflife :</b>	24 Month
<b>Pack Barcode:</b>	8690103141582
<b>Box Barcode:</b>	08690103415867



### 1000 ml Glass Bottle Riviera Olive Oil

<b>Net Weight :</b>	1000 ml
<b>Gross Weight :</b>	1,52 kgs
<b>Pieces/Box :</b>	12 Pcs
<b>Boxes/Pallet :</b>	35 Box
<b>Shelflife :</b>	24 Month
<b>Pack Barcode:</b>	8690103141667
<b>Box Barcode:</b>	08690103416666



### 1000 ml Pet Bottle Riviera Olive Oil

<b>Net Weight :</b>	1000 ml
<b>Gross Weight :</b>	970 g
<b>Pieces/Box :</b>	12 Pcs
<b>Boxes/Pallet :</b>	50 Box
<b>Shelflife :</b>	24 Month
<b>Pack Barcode:</b>	8690103141681
<b>Box Barcode:</b>	08690103416864



### 2000 ml Pet Bottle Riviera Olive Oil

<b>Net Weight :</b>	2000 ml
<b>Gross Weight :</b>	1,9 kgs
<b>Pieces/Box :</b>	6 Pcs
<b>Boxes/Pallet :</b>	50 Box
<b>Shelflife :</b>	24 Month
<b>Pack Barcode:</b>	8690103141889
<b>Box Barcode:</b>	08690103418868



### 5000 ml Tin Riviera Olive Oil

<b>Net Weight :</b>	5000 ml
<b>Gross Weight :</b>	4,963 kgs
<b>Pieces/Box :</b>	4 Pcs
<b>Boxes/Pallet :</b>	50 Box
<b>Shelflife :</b>	24 Month
<b>Pack Barcode:</b>	8690103141919
<b>Box Barcode:</b>	08690103419179

# SALAD SAUCE & OLIVE CHOCOLATE



## 10 ml Glass Bottle Olive Oil Sauce

<b>Net Weight :</b>	10 g
<b>Gross Weight :</b>	35 g
<b>Pieces/Box :</b>	300 Pcs
<b>Boxes/Pallet :</b>	72 Box
<b>Shelflife :</b>	12 Month
<b>Pack Barcode:</b>	8690103422483
<b>Box Barcode:</b>	08690103422469



## 10 ml Sachet Olive Oil Sauce

<b>Net Weight :</b>	10 g
<b>Gross Weight :</b>	11 g
<b>Pieces/Box :</b>	500 Pcs
<b>Boxes/Pallet :</b>	65 Box
<b>Shelflife :</b>	12 Month
<b>Pack Barcode:</b>	8690103145221
<b>Box Barcode:</b>	08690103145238



## 360 g Olive Chocolate 24 pcs

<b>Net Weight :</b>	360 g
<b>Gross Weight :</b>	550 g
<b>Pieces/Box :</b>	6 Pcs
<b>Boxes/Pallet :</b>	80 Box
<b>Shelflife :</b>	12 Month
<b>Pack Barcode:</b>	8690103030206



## 180 g Olive Chocolate 12 pcs

<b>Net Weight :</b>	180 g
<b>Gross Weight :</b>	290 g
<b>Pieces/Box :</b>	12 Pcs
<b>Boxes/Pallet :</b>	80 Box
<b>Shelflife :</b>	12 Month
<b>Pack Barcode:</b>	8690103030107



### 3 kgs Tin Unseasoned Olive Paste

Net Weight :	3 kgs
Drained Weight :	3 kgs
Gross Weight :	3,3 kgs
Pieces/Box :	3 Pcs
Boxes/Pallet :	70 Box
Shelflife :	24 Month
Pack Barcode:	8690103131712
Box Barcode:	08690103317154



### 3 kgs Tin Seasoned Olive Paste

Net Weight :	3 kgs
Drained Weight :	3 kgs
Gross Weight :	3,3 kgs
Pieces/Box :	3 Pcs
Boxes/Pallet :	70 Box
Shelflife :	24 Month
Pack Barcode:	8690103132719
Box Barcode:	08690103327153



### 340 g Jar Unseasoned Olive Paste

Net Weight :	340 g
Drained Weight :	340 g
Gross Weight :	530 g
Pieces/Box :	12 Pcs
Boxes/Pallet :	130 Box
Shelflife :	24 Month
Pack Barcode:	8690103131347
Box Barcode:	08690103313477



### 340 g Jar Seasoned Olive Paste

Net Weight :	340 g
Drained Weight :	340 g
Gross Weight :	530 g
Pieces/Box :	12 Pcs
Boxes/Pallet :	130 Box
Shelflife :	24 Month
Pack Barcode:	8690103132344
Box Barcode:	08690103323476



### 175 g Jar Unseasoned Olive Paste

Net Weight :	175 g
Drained Weight :	175 g
Gross Weight :	300 g
Pieces/Box :	12 Pcs
Boxes/Pallet :	228 Box
Shelflife :	24 Month
Pack Barcode:	8690103131149
Box Barcode:	08690103311473



### 175 g Jar Seasoned Olive Paste

Net Weight :	175 g
Drained Weight :	175 g
Gross Weight :	300 g
Pieces/Box :	12 Pcs
Boxes/Pallet :	228 Box
Shelflife :	24 Month
Pack Barcode:	8690103132146
Box Barcode:	08690103321472

OLIVE PASTE



## 8 Kgs Tin Sliced Black Olives in Brine

Net Weight :	13,7 kgs
Drained Weight :	8 kgs
Gross Weight :	14,6 kgs
Pieces/Box :	1 pc
Boxes/Pallet :	45 Pcs
Shelflife :	24 Month
Pack Barcode:	8690103010307



## 8 Kgs Tin Sliced Green Olives in Brine

Net Weight :	14 kgs
Drained Weight :	8 kgs
Gross Weight :	14,9 kgs
Pieces/Box :	1 pc
Boxes/Pallet :	45 Pcs
Shelflife :	24 Month
Pack Barcode:	8690103010109



## 2 Kgs Tin Sliced Black Olives in Brine

Net Weight :	4 kgs
Drained Weight :	2 kgs
Gross Weight :	4,365 kgs
Pieces/Box :	3 Pcs
Boxes/Pallet :	55 Box
Shelflife :	24 Month
Pack Barcode:	8690103010802
Box Barcode:	08690103108028



## 2 Kgs Tin Sliced Green Olives in Brine

Net Weight :	4 kgs
Drained Weight :	2 kgs
Gross Weight :	4,365 kgs
Pieces/Box :	3 Pcs
Boxes/Pallet :	55 Box
Shelflife :	24 Month
Pack Barcode:	8690103010710
Box Barcode:	08690103107113



## 170 g Jar Sliced Black Olives in Brine

Net Weight :	350 g
Drained Weight :	170 g
Gross Weight :	550 g
Pieces/Box :	12 Pcs
Boxes/Pallet :	120 Box
Shelflife :	24 Month
Pack Barcode:	8690103010444
Box Barcode:	08690103010451



## 170 g Jar Sliced Green Olives in Brine

Net Weight :	350 g
Drained Weight :	170 g
Gross Weight :	550 g
Pieces/Box :	12 Pcs
Boxes/Pallet :	120 Box
Shelflife :	24 Month
Pack Barcode:	8690103010420
Box Barcode:	08690103010437



**10 Kgs Tin Green Olives Stuffed  
With Red Pepper - 141-160 pcs/kgs - 4XL**

**Net Weight :** 15,2 kgs  
**Drained Weight :** 10 kgs  
**Gross Weight :** 16,1 kgs  
**Pieces/Box :** 1 pc  
**Boxes/Pallet :** 45 Pcs  
**Shelflife :** 24 Month  
**Pack Barcode:** 8690103850019



**10 Kgs Tin Green Olives Stuffed  
With Red Pepper - 201-230 pcs/kgs - XL**

**Net Weight :** 15,2 kgs  
**Drained Weight :** 10 kgs  
**Gross Weight :** 16,1 kgs  
**Pieces/Box :** 1 pc  
**Boxes/Pallet :** 45 Pcs  
**Shelflife :** 24 Month  
**Pack Barcode:** 8690103850040



**10 Kgs Tin Whole Green Olives  
101-120 pcs/kgs - 7XL/6XL**

**Net Weight :** 15,6 kgs  
**Drained Weight :** 10 kgs  
**Gross Weight :** 16,6 kgs  
**Pieces/Box :** 1 pc  
**Boxes/Pallet :** 45 Pcs  
**Shelflife :** 24 Month  
**Pack Barcode:** 8690103840003



**10 Kgs Tin Whole Green Olives  
141-160 pcs/kgs - 4XL**

**Net Weight :** 15,6 kgs  
**Drained Weight :** 10 kgs  
**Gross Weight :** 16,6 kgs  
**Pieces/Box :** 1 pc  
**Boxes/Pallet :** 45 Pcs  
**Shelflife :** 24 Month  
**Pack Barcode:** 8690103840027



**10 Kgs Tin Whole Green Olives  
181-200 pcs/kgs - 2XL**

**Net Weight :** 15,6 kgs  
**Drained Weight :** 10 kgs  
**Gross Weight :** 16,6 kgs  
**Pieces/Box :** 1 pc  
**Boxes/Pallet :** 45 Pcs  
**Shelflife :** 24 Month  
**Pack Barcode:** 8690103840041



**10 Kgs Tin Whole Green Olives  
231-260 pcs/kgs - L**

**Net Weight :** 15,6 kgs  
**Drained Weight :** 10 kgs  
**Gross Weight :** 16,6 kgs  
**Pieces/Box :** 1 pc  
**Boxes/Pallet :** 45 Pcs  
**Shelflife :** 24 Month  
**Pack Barcode:** 8690103840065



**10 Kgs Tin Cracked Green Olives  
121-140 pcs/kgs - 5XL**

**Net Weight :** 14,3 kgs  
**Drained Weight :** 10 kgs  
**Gross Weight :** 15,2 kgs  
**Pieces/Box :** 1 pc  
**Boxes/Pallet :** 45 Pcs  
**Shelflife :** 24 Month  
**Pack Barcode:** 8690103850002



**10 Kgs Tin Cracked Green Olives  
161-180 pcs/kgs - 3XL**

**Net Weight :** 14,3 kgs  
**Drained Weight :** 10 kgs  
**Gross Weight :** 15,2 kgs  
**Pieces/Box :** 1 pc  
**Boxes/Pallet :** 45 Pcs  
**Shelflife :** 24 Month  
**Pack Barcode:** 8690103860025



**10 Kgs Tin Cracked Green Olives  
201-230 pcs/kgs - XL**

**Net Weight :** 14,3 kgs  
**Drained Weight :** 10 kgs  
**Gross Weight :** 15,2 kgs  
**Pieces/Box :** 1 pc  
**Boxes/Pallet :** 45 Pcs  
**Shelflife :** 24 Month  
**Pack Barcode:** 8690103860049



**10 Kgs Tin Cracked Green Olives  
261-290 pcs/kgs - M**

**Net Weight :** 14,3 kgs  
**Drained Weight :** 10 kgs  
**Gross Weight :** 15,2 kgs  
**Pieces/Box :** 1 pc  
**Boxes/Pallet :** 45 Pcs  
**Shelflife :** 24 Month  
**Pack Barcode:** 8690103860063

**10 KGS TIN PACKS GREEN OLIVES**

# 10 KGS TIN PACKS GREEN OLIVES



## 10 Kgs Tin Scratched Green Olives 201-230 pcs/kgs - XL

<b>Net Weight :</b>	15,8 kgs
<b>Drained Weight :</b>	10 kgs
<b>Gross Weight :</b>	16,8 kgs
<b>Pieces/Box :</b>	1 pc
<b>Boxes/Pallet :</b>	45 Pcs
<b>Shelflife :</b>	24 Month
<b>Pack Barcode:</b>	8690103870017



## 10 Kgs Tin Scratched Green Olives 231-260 pcs/kgs - L

<b>Net Weight :</b>	15,8 kgs
<b>Drained Weight :</b>	10 kgs
<b>Gross Weight :</b>	16,8 kgs
<b>Pieces/Box :</b>	1 pc
<b>Boxes/Pallet :</b>	45 Pcs
<b>Shelflife :</b>	24 Month
<b>Pack Barcode:</b>	8690103870024



## 10 Kgs Tin Scratched Green Olives 261-290 pcs/kgs - M

<b>Net Weight :</b>	15,8 kgs
<b>Drained Weight :</b>	10 kgs
<b>Gross Weight :</b>	16,8 kgs
<b>Pieces/Box :</b>	1 pc
<b>Boxes/Pallet :</b>	45 Pcs
<b>Shelflife :</b>	24 Month
<b>Pack Barcode:</b>	8690103870031



## 10 Kgs Tin Scratched Green Olives 291-320 pcs/kgs - S

<b>Net Weight :</b>	15,8 kgs
<b>Drained Weight :</b>	10 kgs
<b>Gross Weight :</b>	16,8 kgs
<b>Pieces/Box :</b>	1 pc
<b>Boxes/Pallet :</b>	45 Pcs
<b>Shelflife :</b>	24 Month
<b>Pack Barcode:</b>	8690103870048



## 10 Kgs Tin Scratched Green Olives 321-350 pcs/kgs - XS

<b>Net Weight :</b>	15,8 kgs
<b>Drained Weight :</b>	10 kgs
<b>Gross Weight :</b>	16,8 kgs
<b>Pieces/Box :</b>	1 pc
<b>Boxes/Pallet :</b>	45 Pcs
<b>Shelflife :</b>	24 Month
<b>Pack Barcode:</b>	8690103870055



## 10 Kgs Tin Scratched Green Olives 351-380 pcs/kgs - 2XS

<b>Net Weight :</b>	15,8 kgs
<b>Drained Weight :</b>	10 kgs
<b>Gross Weight :</b>	16,8 kgs
<b>Pieces/Box :</b>	1 pc
<b>Boxes/Pallet :</b>	45 Pcs
<b>Shelflife :</b>	24 Month
<b>Pack Barcode:</b>	8690103870062

**800 g Green Olives Stuffed With Red Pepper - 201-230 pcs/kgs - XL**

Net Weight :	1,26 kgs
Drained Weight :	800 g
Gross Weight :	1,4 kgs
Pieces/Box :	6 Pcs
Boxes/Pallet :	108 Box
Shelflife :	24 Month
Pack Barcode:	8690103852051
Box Barcode:	08690103520578

**800 g Tin Whole Green Olives 161-180 pcs/kgs - 3XL**

Net Weight :	1,26 kgs
Drained Weight :	800 g
Gross Weight :	1,4 kgs
Pieces/Box :	6 Pcs
Boxes/Pallet :	108 Box
Shelflife :	24 Month
Pack Barcode:	8690103842038
Box Barcode:	08690103420373

**800 g Tin Cracked Green Olives 161-180 pcs/kgs - 3XL**

Net Weight :	1,26 kgs
Drained Weight :	800 g
Gross Weight :	1,4 kgs
Pieces/Box :	6 Pcs
Boxes/Pallet :	108 Box
Shelflife :	24 Month
Pack Barcode:	8690103862029
Box Barcode:	08690103620278

**800 g Tin Scratched Green Olives 351-380 pcs/kgs - 2XS**

Net Weight :	1,26 kgs
Drained Weight :	800 g
Gross Weight :	1,4 kgs
Pieces/Box :	6 Pcs
Boxes/Pallet :	108 Box
Shelflife :	24 Month
Pack Barcode:	8690103872066
Box Barcode:	08690103720671

**400 g Green Olives Stuffed With Red Pepper - 201-230 pcs/kgs - XL**

Net Weight :	800 g
Drained Weight :	400 g
Gross Weight :	900 g
Pieces/Box :	6 Pcs
Boxes/Pallet :	132 Box
Shelflife :	24 Month
Pack Barcode:	8690103851054
Box Barcode:	08690103510579

**400 g Tin Whole Green Olives 161-180 pcs/kgs - 3XL**

Net Weight :	800 g
Drained Weight :	400 g
Gross Weight :	900 g
Pieces/Box :	6 Pcs
Boxes/Pallet :	132 Box
Shelflife :	24 Month
Pack Barcode:	8690103841031
Box Barcode:	08690103410374

**400 g Tin Cracked Green Olives 161-180 pcs/kgs - 3XL**

Net Weight :	800 g
Drained Weight :	400 g
Gross Weight :	900 g
Pieces/Box :	6 Pcs
Boxes/Pallet :	132 Box
Shelflife :	24 Month
Pack Barcode:	8690103861022
Box Barcode:	08690103610279

**400 g Tin Scratched Green Olives 351-380 pcs/kgs - 2XS**

Net Weight :	800 g
Drained Weight :	400 g
Gross Weight :	900 g
Pieces/Box :	6 Pcs
Boxes/Pallet :	132 Box
Shelflife :	24 Month
Pack Barcode:	8690103871069
Box Barcode:	08690103710672

**800 - 400 G TIN PACKS GREEN OLIVES**

# VACUUM - PET PACKS GREEN OLIVES



## 500 g Vacuum Whole Green Olives 161-180 pcs/kgs - 3XL

<b>Net Weight :</b>	550 g
<b>Drained Weight :</b>	500 g
<b>Gross Weight :</b>	564 g
<b>Pieces/Box :</b>	24 Pcs
<b>Boxes/Pallet :</b>	54 Box
<b>Shelflife :</b>	12 Month
<b>Pack Barcode:</b>	8690103004023
<b>Box Barcode:</b>	08690103004030



## 200 g Vacuum Whole Green Olives 161-180 pcs/kgs - 3XL

<b>Net Weight :</b>	225 g
<b>Drained Weight :</b>	200 g
<b>Gross Weight :</b>	237 g
<b>Pieces/Box :</b>	24 Pcs
<b>Boxes/Pallet :</b>	78 Box
<b>Shelflife :</b>	12 Month
<b>Pack Barcode:</b>	8690103004009
<b>Box Barcode:</b>	08690103004016



## 950 g Pet Package Green Olives Stuffed With Red Pepper - 201-230 pcs/kgs - XL

<b>Net Weight :</b>	1,6 kgs
<b>Drained Weight :</b>	950 g
<b>Gross Weight :</b>	1,75 kgs
<b>Pieces/Box :</b>	6 Pcs
<b>Boxes/Pallet :</b>	80 Box
<b>Shelflife :</b>	12 Month
<b>Pack Barcode:</b>	8690103155459
<b>Box Barcode:</b>	08690103554573



## 950 g Pet Package Whole Green Olives 161-180 pcs/kgs - 3XL

<b>Net Weight :</b>	1,6 kgs
<b>Drained Weight :</b>	950 g
<b>Gross Weight :</b>	1,75 kgs
<b>Pieces/Box :</b>	6 Pcs
<b>Boxes/Pallet :</b>	80 Box
<b>Shelflife :</b>	12 Month
<b>Pack Barcode:</b>	8690103143456
<b>Box Barcode:</b>	08690103434578



## 950 g Pet Package Cracked Green Olives 161-180 pcs/kgs - 3XL

<b>Net Weight :</b>	1,6 kgs
<b>Drained Weight :</b>	950 g
<b>Gross Weight :</b>	1,75 kgs
<b>Pieces/Box :</b>	6 Pcs
<b>Boxes/Pallet :</b>	80 Box
<b>Shelflife :</b>	12 Month
<b>Pack Barcode:</b>	8690103163454
<b>Box Barcode:</b>	08690103634589



## 950 g Pet Package Scratched Green Olives 291-320 pcs/kgs - S

<b>Net Weight :</b>	1,6 kgs
<b>Drained Weight :</b>	950 g
<b>Gross Weight :</b>	1,75 kgs
<b>Pieces/Box :</b>	6 Pcs
<b>Boxes/Pallet :</b>	80 Box
<b>Shelflife :</b>	12 Month
<b>Pack Barcode:</b>	8690103178458
<b>Box Barcode:</b>	08690103784574

**850 g Jar Green Olives Stuffed With Red Pepper  
201-230 pcs/kgs - XL**

Net Weight :	1,48 kgs
Drained Weight :	850 g
Gross Weight :	2,1 kgs
Pieces/Box :	6 Pcs
Boxes/Pallet :	60 Box
Shelflife :	24 Month
Pack Barcode:	8690103800182
Box Barcode:	08690103800199

**850 g Jar Whole Green Olives  
161-180 pcs/kgs - 3XL**

Net Weight :	1,48 kgs
Drained Weight :	850 g
Gross Weight :	2,1 kgs
Pieces/Box :	6 Pcs
Boxes/Pallet :	60 Box
Shelflife :	24 Month
Pack Barcode:	8690103800304
Box Barcode:	08690103800311

**850 g Jar Cracked Green Olives  
161-180 pcs/kgs - 3XL**

Net Weight :	1,48 kgs
Drained Weight :	850 g
Gross Weight :	2,1 kgs
Pieces/Box :	6 Pcs
Boxes/Pallet :	60 Box
Shelflife :	24 Month
Pack Barcode:	8690103800267
Box Barcode:	08690103800274

**850 g Jar Scratched Green Olives  
291-320 pcs/kgs - S**

Net Weight :	1,48 kgs
Drained Weight :	850 g
Gross Weight :	2,1 kgs
Pieces/Box :	6 Pcs
Boxes/Pallet :	60 Box
Shelflife :	24 Month
Pack Barcode:	8690103800328
Box Barcode:	08690103800335

**400 g Jar Green Olives Stuffed With  
Red Pepper - 201-230 pcs/kgs - XL**

Net Weight :	680 g
Drained Weight :	400 g
Gross Weight :	1 kgs
Pieces/Box :	6 Pcs
Boxes/Pallet :	128 Box
Shelflife :	24 Month
Pack Barcode:	8690103810020
Box Barcode:	08690103100206

**400 g Jar Whole Green Olives  
161-180 pcs/kgs - 3XL**

Net Weight :	710 g
Drained Weight :	400 g
Gross Weight :	1,03 kgs
Pieces/Box :	6 Pcs
Boxes/Pallet :	128 Box
Shelflife :	24 Month
Pack Barcode:	8690103800021
Box Barcode:	08690103000926

**400 g Jar Cracked Green Olives  
161-180 pcs/kgs - 3XL**

Net Weight :	710 g
Drained Weight :	400 g
Gross Weight :	1,03 kgs
Pieces/Box :	6 Pcs
Boxes/Pallet :	128 Box
Shelflife :	24 Month
Pack Barcode:	8690103820029
Box Barcode:	08690103200296

**400 g Jar Scratched Green Olives  
261-290 pcs/kgs - M**

Net Weight :	710 g
Drained Weight :	400 g
Gross Weight :	1,03 kgs
Pieces/Box :	6 Pcs
Boxes/Pallet :	128 Box
Shelflife :	24 Month
Pack Barcode:	8690103853065
Box Barcode:	08690103530652

**400 g Jar Green Olives Stuffed  
With Garlic - 201-230 pcs/kgs - XL**

Net Weight :	680 g
Drained Weight :	400 g
Gross Weight :	1 kg
Pieces/Box :	6 Pcs
Boxes/Pallet :	128 Box
Shelflife :	24 Month
Pack Barcode:	8690103810099
Box Barcode:	08690103100916

**400 g Jar Green Olives Stuffed  
With Almond - 161-180 pcs/kgs - 3XL**

Net Weight :	690 g
Drained Weight :	400 g
Gross Weight :	1 kg
Pieces/Box :	6 Pcs
Boxes/Pallet :	128 Box
Shelflife :	24 Month
Pack Barcode:	8690103810037
Box Barcode:	08690103100374

# GREEN OLIVES IN JAR



## 400 g Jar Green Olives Stuffed With Lemon - 161-180 pcs/kgs - 3XL

<b>Net Weight :</b>	690 g
<b>Drained Weight :</b>	400 g
<b>Gross Weight :</b>	1 kg
<b>Pieces/Box :</b>	6 Pcs
<b>Boxes/Pallet :</b>	128 Box
<b>Shelflife :</b>	24 Month
<b>Pack Barcode:</b>	8690103100695
<b>Box Barcode:</b>	08690103100701



## 400 g Jar Green Olives Stuffed With Orange - 161-180 pcs/kgs - 3XL

<b>Net Weight :</b>	690 g
<b>Drained Weight :</b>	400 g
<b>Gross Weight :</b>	1 kg
<b>Pieces/Box :</b>	6 Pcs
<b>Boxes/Pallet :</b>	128 Box
<b>Shelflife :</b>	24 Month
<b>Pack Barcode:</b>	8690103100718
<b>Box Barcode:</b>	08690103100725

# Olive Home



**500 g Jar Oil Cured Organic Black Olives - 201-260 pcs/kgs - XL-L**

**Net Weight :** 510 g  
**Drained Weight :** 500 g  
**Gross Weight :** 825 g  
**Pieces/Box :** 6 Pcs  
**Boxes/Pallet :** 144 Box  
**Shelflife :** 12 Month  
**Pack Barcode:** 8690103999015  
**Box Barcode:** 08690103999022



**500 g Jar Oil Cured Organic Black Olives - 261-320 pcs/kgs - M-S**

**Net Weight :** 510 g  
**Drained Weight :** 500 g  
**Gross Weight :** 825 g  
**Pieces/Box :** 6 Pcs  
**Boxes/Pallet :** 144 Box  
**Shelflife :** 12 Month  
**Pack Barcode:** 8690103999039  
**Box Barcode:** 08690103999046



**500 g Jar Oil Cured Organic Black Olives - 321-380 pcs/kgs - XS-2XS**

**Net Weight :** 510 g  
**Drained Weight :** 500 g  
**Gross Weight :** 825 g  
**Pieces/Box :** 6 Pcs  
**Boxes/Pallet :** 144 Box  
**Shelflife :** 12 Month  
**Pack Barcode:** 8690103999053  
**Box Barcode:** 08690103999060



**500 ml Glass Bottle Organic Extra Virgin Olive Oil**

**Net Weight :** 500 ml  
**Gross Weight :** 865 g  
**Pieces/Box :** 12 Pcs  
**Boxes/Pallet :** 65 Box  
**Shelflife :** 24 Month  
**Pack Barcode:** 8690103999077  
**Box Barcode:** 08690103999084

**ORGANIC BLACK OLIVES & ORGANIC EXTRA VIRGIN OLIVE OIL**

# FREQUENTLY ASKED QUESTIONS



## FREQUENTLY ASKED QUESTIONS

### How do you define good olive?

Good quality table olive should have a thin skin, small should be high whereas water content is low. Besides should highly fatty likewise the most important taste element in almost every food. "Gemlik Sort" of olive which is the most common variety is described with the positive features mentioned. "Gemlik Sort" of olive takes its features from the ecological conditions of Southern Marmara Region. Due to the special climate, Southern Marmara region provides us "Gemlik Sort" of olive that exists nowhere else in the world.

Good quality table olive, together with the features mentioned should have strong pulp tissue, should not have a defect on the peel and be processed naturally. Black olive should have black color or a color almost like black, green olive on the hand should have a colour tone ranging from green to yellowish green. No uniform color is sought neither on black nor on green olives. Olive which is an agricultural product may have different color tones in the package. This is also an indication of naturalness.

### What aspects should be considered when purchasing olives?

If we would like to buy good quality olives it will be to our advantage to prefer packaged products. Whether it is black or green it should primarily be produced according to the Olive Communiqué of Turkish Food Codex. Only by this way we can understand that the product we purchased complies to the relevant legislation of the Ministry and be confident that it is not "produced under the stairs" which is a very common phrase used in food stuff production.

Besides, having related TSE Standards (Turkish Standards Institution) and quality and food safety certificates of ISO (International Standards Organization) are the additional features adding value to the product. On the other hand it is very important that olive which is a food product is able to be monitored from its production to consumption process and the shelf life is guaranteed.

Another important issue is the brand value of the product. As it is widely known corporate and international brands operating in manufacturing should protect their brand value. Quality and food safety are at the forefront especially with brands doing exports. Therefore these kinds of facilities give importance to quality, trust and continuity principles and spend more time and engineering. This makes the product of that brand more valuable.

In short the brand value of the product to be purchased is an important criterion.

### What does Natural Olive mean? How natural fermentation is provided?

Olive, which is defined as divine fruit in fact represents purity and naturalness. However the fruit has an important distinguishing feature. This feature is its consumption directly after being picked up from branches and to be subject to sweetening process. There are various methods of sweetening the olive. With "Natural Fermentation" method olive is sweetened without damaging its purity and naturalness.

Natural fermentation is briefly: olives becoming edible in 6-9 month's time without using any chemical substances and by only being treated with salt and water. Little scientifically, fermentation of oleuropein substance which gives the particular bitter taste to olive is fermented with good bacteria (like bacteria make yoghurt from milk)

What makes Gemlik type of olive so valuable is the unique stone pressed natural fermentation technique used to sweeten and the continued implementation of it. In other words it is matured as if wine by applying stone press only with salt and water in the fermentation pools special to olives

### **Why Natural Fermentation ?**

- No chemical material is used except for salt and organic acid due to its natural processing technique .
- Have a special and aromatic taste as a result of maintenance of phenolic taste and components within olive in maximum level with natural processing technique
- A valuable food product in terms of nutrition contained with minimum loss of the polyphen substance which are color and flavor components and known to be carcinogenic

### **How to choose between packed and non-packed olive ?**

As with all food sectors it is also encountered by imitation and debasement in olive and olive oil. Particularly, the rate is high on table olives sold in markets and deli departments without package which is expressed as bulk sales.

Operation control mechanism is hard to handle with the products sold as bulk which is called unrecorded production and unfortunately exceeding dimensions become threatening to human health. These kinds of facilities which are called "under stair production" do not want to bear the process of the sweetening of natural fermented olive, inventory costs and the waste due to the operation technique. For this reason profit focused enterprises ignore human health and produce under conditions which do not comply with food production. Chemical materials and preservatives which do not take place in Food Codex regulations must be used.

These kind of products are harmful to human health and cause serious damage to the economy of the country since they are unrecorded. On the other hand the companies producing under hygienic conditions complying to the food regulations, bear inventory and waste costs and monthly taxes to the government are confronted with unfair competition.

Tricks mainly in process technique such as selling the product as natural fermented even if it is not, moreover selling the olives as Gemlik Sort even if they are not selling mixed product ( mix high varieties with high economic value with low varieties) must be faced in the table olive sector.

If it is a packaged product

- Above all it is a recorded production
- Content of the product is written on it
- Production and best before dates are known
- Storing conditions are mentioned

For these and similar reasons avoiding imitation and debasement is possible with no doubt by preference of packaged product and reliable brand

### **Olives of which region is more desirable?**

Our country has a quite rich geography in terms of olive varieties. When evaluated according to the varieties, "Gemlik Sort" which has the highest share in table olive production is produced even in every region of our country. However even if it is the type, product features must vary regionally.

Gemlik Sort of olive's original growing region is Marmara but then it becomes widespread in Manisa, Balıkesir, Hatay, Adana, Mersin regions. Marmara Region Gemlik Sort olives are distinguished from Gemlik Sort of other regions with their thin crust, small seeds as well as the rich taste and aromatic features obtained after fermentation in the end product. The superior properties mentioned are also reflected to the sweetening and shelf life process and it manifests positively in Marmara Region olives

Carried out with the productions of companies recognized in the market, has a brand and ensure continuity.

Other important point is Agriculture Sales Co-operatives. Co-operatives can provide products from the same region, same farm even from the same tree every year thanks to their producer partners. This is very important for sustainable quality. These kinds of facilities continue production by putting profitability to the second plan with the support of the producer partners

## **How do you distinguish quality olive oil? Points to remember when purchasing?**

It is possible to obtain quality olive oil with healthy olives harvested in the right time and processed in appropriate conditions in the shortest time possible. Olive oil, defined as Natural olive oil with low free acid content, as well as the aromatic components of the olive fruit, Vitamin E and other polyphenol compounds is a unique elixir for health. Natural olive oil distinguishes from other oils by being obtained directly from the fruit by mechanical processes like fruit juice. Obtaining olive oil with these properties is directly related with the process and storing conditions.

No matter which class it belongs to, quality olive oil contains the components of olive and has a fruity flavor and smell. Do not contain any taste of aroma of deterioration, putrefaction, acidic or mold smell

TodMonth there are many producers and brands in olive oil market and it is encountered by imitation and debasement. These producers gain unfair advantage and ignore ethical values by prioritizing commercial gains and mixing low cost seed oils.

Consumers can only protect themselves from these kinds of deceptive products by selecting the products of reliable companies with brand value. Consumers while purchasing olive or olive oil with other food products should take into attention the following information on the label of the product.

Product label should have;

- Should have the facility registration document number
- Olive oil class should be mentioned (natural, extra virgin, rivierae.t.c)
- If it is olive; processing type and caliber should be mentioned (natural olive, total piece in kgs)
- Ingredients should be mentioned on the label
- Best before date should be mentioned
- How to use and store information for the consumer should be mentioned
- Country of Origin should be mentioned
- Quality Management Numbers should be mentioned if there is any
- Related Turkish Food Codex and Turkish standards numbers should be mentioned

PACKAGING	PACKAGE/BOX DIMENSIONS						PALLET INFO						WEIGHT			SHELF LIFE		
	PIECES/BOX ADET	WEIGHT (KG)	WIDTH (CM)	LENGHT (CM)	HEIGHT (CM)	VOLUME (m3)	NUMBER/ROWS SMONTHSISI	DECK QUANTITY	QUANTITY BOX/PCS.	WEIGHT (KG.)	WIDTH (CM)	LENGHT (CM)	HEIGHT (CM)	VOLUME (m3)	DRAINED (KGS)		NET (KGS)	GROSS (KGS)
10 Kg.Tins	1	15,45	23,5	23,5	26,5	0,0146	15	3	45	711	78	120	80	0,870	10,000	14,600	15,450	24 MONTHS
10 Kg.Tins Y.S.	1	11,00	23,5	23,5	26,5	0,0146	15	5	75	841	78	120	133	1,367	10,000	10,150	11,000	12 MONTHS
8 Kg.Tins	1	15,00	23,5	23,5	26,5	0,0146	15	3	45	691	78	120	80	0,870	8,000	13,700	14,600	24 MONTHS
5 Kg.Tins Y.S	1	5,80	20,0	20,0	22,0	0,0088	24	5	120	712	78	120	110	1,156	5,000	5,080	5,660	12 MONTHS
5 Kg.Tins	1	9,04	20,0	20,0	22,0	0,0088	24	4	96	883	78	120	88	0,950	5,000	8,500	9,040	24 MONTHS
2 Kg.Tins	3	11,00	14,5	48,0	20,0	0,0139	8	9	72	808	78	120	180	1,811	2,000	3,250	3,550	24 MONTHS
2 Kg.Tins Y.S.	3	7,00	15,0	51,5	17,0	0,0131	9	9	81	583	78	120	153	1,558	2,000	2,020	2,300	12 MONTHS
800 Gr.Tins	6	8,80	21,0	31,0	18,0	0,0117	12	9	108	966	78	120	162	1,643	0,800	1,260	1,400	24 MONTHS
400 Gr.Tins	6	6,00	21,0	31,0	12,5	0,0081	12	11	132	808	78	120	138	1,413	0,400	0,800	1,000	24 MONTHS
800 Gr.Dried Black Olives	6	5,83	27,5	40,0	15,5	0,0171	7	11	77	464	78	120	171	1,867	0,800	0,815	0,870	18 MONTHS
400 Gr.Dried Black Olives	12	5,97	24,5	35,0	21,0	0,0180	10	8	80	493	78	120	168	1,502	0,400	0,410	0,450	18 MONTHS
1.4 Kg.Pet	6	9,40	23,0	34,0	22,5	0,0176	10	6	60	580	78	120	135	1,390	1,400	1,415	1,550	12 MONTHS
950 Gr.Pet	6	6,70	22,5	34,0	17,5	0,0134	10	8	80	552	78	120	140	1,437	0,950	0,965	1,100	12 MONTHS
1 Kg.Vacuum	12	13,00	31,0	43,0	21,0	0,0280	6	9	54	718	78	120	189	1,895	1,000	1,000	1,022	24 MONTHS
800 Gr.Vacuum	12	11,00	31,0	42,5	20,0	0,0264	6	10	60	676	78	120	200	1,998	0,800	0,800	0,822	24 MONTHS
500 Gr.Vacuum	24	13,00	31,0	43,0	22,0	0,0293	6	9	54	718	78	120	198	1,980	0,500	0,500	0,514	24 MONTHS
200 Gr.Vacuum	24	5,86	12,0	21,3	15,8	0,0040	6	13	78	473	78	120	205	2,050	0,200	0,200	0,212	24 MONTHS
1.5 Kg.Glass	4	10,80	26,0	26,0	23,0	0,0155	12	5	60	664	78	120	115	1,203	1,500	1,520	1,670	12 MONTHS
1 Kg.Glass	6	11,00	24,0	35,0	19,0	0,0160	10	6	60	676	78	120	114	1,193	1,000	1,015	1,800	12 MONTHS
850 Gr.Glass	6	12,69	22,5	33,0	17,5	0,0130	10	6	60	777	78	120	105	1,109	0,850	1,448	2,098	24 MONTHS
500 Gr.Glass	6	5,10	17,5	27,0	16,0	0,0076	16	10	160	832	78	120	160	1,624	0,500	0,510	0,825	12 MONTHS
400 Gr.Glass Green	6	6,10	17,5	27,0	14,5	0,0069	16	8	128	796	78	120	116	1,212	0,400	0,700	1,000	24 MONTHS
400 Gr.Glass Black	6	6,20	17,5	27,0	14,0	0,0066	16	8	128	809	78	120	112	1,175	0,400	0,710	1,030	24 MONTHS
350 Gr.Glass	6	3,63	20,5	32,5	8,3	0,0055	16	12	192	712	78	120	100	1,282	0,350	0,350	0,570	18 MONTHS
285 Gr.Glass	12	9,10	21,5	30,0	16,0	0,0103	12	8	96	889	78	120	128	1,324	0,285	0,495	0,750	24 MONTHS
170 Gr.Glass	12	6,8	22	30	12,5	0,0083	10	12	120	832	78	120	150	1,530	0,17	0,35	0,55	24 MONTHS
1 Lt.Glass Olive Oil	12	19,20	28,0	36,5	36,0	0,0368	7	5	35	688	78	120	180	1,811	0,910	0,910	1,520	24 MONTHS
1/2 Lt.Glass Olive Oil	12	10,90	23,0	29,5	31,0	0,0210	13	5	65	724	78	120	155	1,577	0,455	0,455	0,865	24 MONTHS
1/4 Lt.Glass Olive Oil	12	5,65	19,0	23,5	24,5	0,0109	19	5	95	552	78	120	123	1,273	0,228	0,228	0,443	24 MONTHS
2 Lt.Pet Olive Oil	6	12,00	22,0	32,0	34,0	0,0239	10	5	50	616	78	120	170	1,718	1,820	1,820	1,900	24 MONTHS
1 Lt.Pet Olive Oil	12	12,20	24,0	30,0	33,0	0,0238	10	5	50	626	78	120	165	1,671	0,910	0,910	0,970	24 MONTHS
1/2 Lt.Pet Olive Oil	12	6,45	21,0	25,0	25,0	0,0131	13	5	65	435	78	120	125	1,296	0,455	0,455	0,495	24 MONTHS
1/4 Lt.Pet Olive Oil	12	3,40	17,5	21,0	21,0	0,0077	19	5	95	339	78	120	105	1,502	0,228	0,228	0,258	24 MONTHS
18 Lt.Tins Olive Oil	1	17,38	23,5	23,5	35,0	0,0193	15	2	30	537	78	120	70	0,782	16,380	16,380	17,380	24 MONTHS
5 Lt.Tins Olive Oil	4	20,00	24,0	33,0	32,0	0,0253	10	5	50	1016	78	120	160	1,624	4,550	4,550	4,963	24 MONTHS
3 Lt.Tins Olive Oil	6	18,40	29,0	33,0	26,0	0,0249	8	6	48	899	78	120	156	1,587	2,730	2,730	3,060	24 MONTHS
1/2 Lt.Tins Olive Oil	6	3,50	18,5	25,0	11,0	0,0051	19	10	190	681	78	120	110	1,161	0,455	0,455	0,550	24 MONTHS
11 Ml.Glass Olive Oil	50x6	11,50	27,0	40,0	13,0	0,0140	9	8	72	844	78	120	104	0,978	0,010	0,010	0,035	12 MONTHS
11 Ml. Olive Oil Sauce Sachet	50x10	6,00	23,0	30,5	24,0	0,0140								0,010	0,010	0,011	12 MONTHS	
3 Kg.Tins Olive Paste	3	10,00	15,5	48,0	18,5	0,0138	10	7	70	716	78	120	130	1,338	3,000	3,000	3,300	24 MONTHS
340 Gr.Glass Olive Paste	12	6,30	22,0	29,0	12,0	0,0077	13	10	130	835	78	120	120	1,250	0,340	0,340	0,530	24 MONTHS
175 Gr.Glass Olive Paste	12	3,60	18,5	25,0	9,5	0,0044	19	12	228	836	78	120	114	1,193	0,175	0,175	0,300	24 MONTHS
360 Gr.Olive Chocolate	24x6	4,05												0,36	0,36	0,53	12 MONTHS	
180 Gr. Olive Chocolate	12x12	4,16												0,18	0,18	0,305	12 MONTHS	
Special Box	3	2670	27,0	28,5	9,8									0,8275	1,2275	2,04	24 MONTHS	

DRY CONTAINER TYPE	PALLET PCS	EURO PALLET SIZE	MAX. CON GROSS WEIGHT	CBM
20" DRY CONTAINER(8"/6")	14	76*119	23.800,00	33,20
40" DRY CONTAINER(8"/6")	30	76*119	23.800,00	67,70
40" HIGH CUBE DRY CONTAINER(9"/6")	30	76*119	23.800,00	76,40
45" HIGH CUBE DRY CONTAINER(9"/6")	33	76*119	23.800,00	85,00
TRUCK (TIR)	PALLET PCS	EURO PALLET SIZE	MAX. CON GROSS WEIGHT	CBM
TRUCK (MEGA TIR)	33	76*119	22.700,00	102,00
REFRIGERATED(FRIGO)	33	76*119	22.700,00	98,00

The first part of the document discusses the importance of maintaining accurate records of all transactions. It emphasizes that every entry, no matter how small, should be recorded to ensure the integrity of the financial data. This includes not only sales and purchases but also expenses and income. The document provides a detailed list of items that should be tracked, such as inventory levels, customer orders, and supplier invoices. It also outlines the procedures for recording these transactions, including the use of specific forms and the assignment of responsibilities to different staff members.

The second part of the document focuses on the analysis of the recorded data. It describes various methods for identifying trends and anomalies in the financial performance. This includes comparing current data with historical data, as well as benchmarking against industry standards. The document also discusses the importance of regular reviews and reports to management, highlighting the need for transparency and accountability in the reporting process. It provides examples of key performance indicators (KPIs) that should be monitored and explains how to interpret the results of these metrics.

The final part of the document addresses the challenges of data management and offers practical solutions. It discusses the importance of data security and the need for robust backup systems to prevent data loss. It also touches on the importance of data accuracy and the steps that should be taken to correct any errors. The document concludes by emphasizing the value of a well-maintained and accurate record-keeping system for the overall success of the organization.



**MARMARABIRLIK**

S.S. MARMARA ZEYTİN TARIM SATIŞ KOOP. BİRLİĞİ

Phn: 0 224 449 00 10 Pbx Fax: 0 224 449 00 30-31 E-mail: [marmarabirlik@marmarabirlik.com.tr](mailto:marmarabirlik@marmarabirlik.com.tr)

Address: Bursa İzmir Karayolu 29 Km. Başköy Mevkii Nilüfer/BURSA